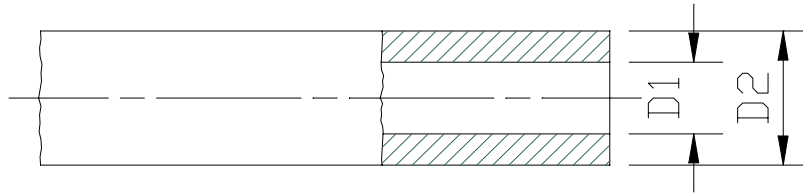


AST Schweiz Schmiertechnik
Anschlüsse und Zubehör
Fittings and Accessories



TUBAZIONI E RACCORDI

FITTINGS AND HOSES



TUBAZIONI IN POLIAMMIDE PA6 = NYLON PA6 COLORE NEUTRO TEMPERATURE DA 0 °C A + 70 °C	POLYAMIDE HOSES PA6 = NYLON PA6 NEUTRAL COLOR TEMPERATURE FROM 0 °C TO + 70 °C
----------------------------------------------------------------------------------------	-----------------------------------------------------------------------------------

CODICE CODE	D2	D1	PESO WEIGHT	PRESSI ONE DI ESERCIZIO A 20 °C WORKING PRESSURE A 20 °C	PRESSI ONE DI SCOPPIO A 20 °C BURST PRESSURE AT 20 °C	MI NI MO RAGGI O DI CURVATURA MI NI MUM BENDI NG RADI US
	MM	MM	G/M	BARS	BARS	MM
30.090.0 *	4	2	10.4	50	200	30
30.100.0 *	4	2.5	8.4	45	180	45
30.110.0 *	4	3	6	40	160	55
30.115.0 *	6	3	24	56	167	38
30.120.0 *	6	4	17.3	50	200	60
30.130.0 *	8	6	24.2	30	120	120
30.140.0 **	10	8	31.1	30	120	250
30.150.0 **	12	10	38	25	100	280

* MINIMA QUANTITA' ORDINABILE 100 M	* MINIMUM QUANTITY TO ORDER 100 M
** MINIMA QUANTITA' ORDINABILE 500 M	** MINIMUM QUANTITY TO ORDER 500 M

TUBAZIONI POLIAMMIDE PA12 COLORE NEUTRO TEMPERATURA DA -20°C A +80°C	POLYAMIDE HOSES PA12 NEUTRAL COLOR TEMPERATURE FROM -20 °C TO + 80 °C
-------------------------------------------------------------------------	--------------------------------------------------------------------------

CODICE CODE	D2	D1	PESO WEIGHT	PRESSI ONE DI ESERCIZIO A 20 °C WORKING PRESSURE A 20 °C	PRESSI ONE DI SCOPPIO A 20 °C BURST PRESSURE AT 20 °C	MI NI MO RAGGI O DI CURVATURA MI NI MUM BENDI NG RADI US
	MM	MM	G/M	BARS	BARS	MM
30.155.0 *	4	2	9.8	33	133	16
30.155.1 *	4	2.5	8	23	92	24
30.155.2 *	4	3	5.7	14	57	28
30.155.3 *	6	3	22	33	133	25
30.155.4 **	8	5	32	23	92	33
30.155.5 **	10	6	52.2	25	100	90

* MINIMA QUANTITA' ORDINABILE 100 M	* MINIMUM QUANTITY TO ORDER 100 M
** MINIMA QUANTITA' ORDINABILE 500 M	** MINIMUM QUANTITY TO ORDER 500 M

TUBAZIONI POLIAMMIDE PA12 COLORE NERO TEMPERATURA DA -20°C A +80°C				POLYAMIDE HOSES PA12 BLACK COLOR TEMPERATURE FROM -20 °C TO + 80 °C		
CODICE CODE	D2	D1	PESO WEIGHT	PRESSIONE DI ESERCIZIO A 20 °C WORKING PRESSURE A 20 °C	PRESSIONE DI SCOPPIO A 20 °C BURST PRESSURE AT 20 °C	MINIMO RAGGIO DI CURVATURA MINIMUM BENDING RADIUS
	MM	MM	G/M	BARS	BARS	MM
30.155.0.N*	4	2	9.8	33	133	16
30.155.1.N*	4	2.5	8	23	92	24
30.155.2.N*	4	3	5.7	14	57	28
30.155.3.N*	6	3	22	33	133	25
30.155.4.N**	8	5	32	23	92	33
30.155.5.N**	10	6	52.2	25	100	90

* MINIMA QUANTITA' ORDINABILE 100 M	* MINIMUM QUANTITY TO ORDER 100 M
** MINIMA QUANTITA' ORDINABILE 500 M	** MINIMUM QUANTITY TO ORDER 500 M

TUBAZIONI POLIAMMIDE PA12 SR COLORE NEUTRO TEMPERATURA DA -20°C A +80°C				POLYAMIDE HOSES PA12 SR NEUTRAL COLOR TEMPERATURE FROM -20 °C TO + 80 °C		
CODICE CODE	D2	D1	PESO WEIGHT	PRESSIONE DI ESERCIZIO A 20 °C WORKING PRESSURE A 20 °C	PRESSIONE DI SCOPPIO A 20 °C BURST PRESSURE AT 20 °C	MINIMO RAGGIO DI CURVATURA MINIMUM BENDING RADIUS
	MM	MM	G/M	BARS	BARS	MM
30.159.0*	4	2	9.8	70	280	25
30.160.0*	4	2.5	8	48	193	36
30.160.1*	4	3	5.7	30	120	42
30.161.0*	6	3	22	70	280	36
30.162.0**	8	5	32	48	193.5	80
30.163.0**	10	6	52.2	52.5	210	135

* MINIMA QUANTITA' ORDINABILE 100 M	* MINIMUM QUANTITY TO ORDER 100 M
** MINIMA QUANTITA' ORDINABILE 500 M	** MINIMUM QUANTITY TO ORDER 500 M

TUBAZIONI POLIAMMIDE PA12 SR COLORE NERO TEMPERATURA DA -20°C A +80°C				POLYAMIDE HOSES PA12 SR BLACK COLOR TEMPERATURE FROM -20 °C TO + 80 °C		
CODICE CODE	D2	D1	PESO WEIGHT	PRESSIONE DI ESERCIZIO A 20 °C WORKING PRESSURE A 20 °C	PRESSIONE DI SCOPPIO A 20 °C BURST PRESSURE AT 20 °C	MINIMO RAGGIO DI CURVATURA MINIMUM BENDING RADIUS
	MM	MM	G/M	BARS	BARS	MM
30.159.0.N*	4	2	9.8	70	280	25
30.160.0.N*	4	2.5	8	48	193	36
30.160.1.N*	4	3	5.7	30	120	42
30.161.0.N*	6	3	22	70	280	36
30.162.0.N**	8	5	32	48	193.5	80
30.163.0.N**	10	6	52.2	52.5	210	135

* MINIMA QUANTITA' ORDINABILE 100 M	* MINIMUM QUANTITY TO ORDER 100 M
** MINIMA QUANTITA' ORDINABILE 500 M	** MINIMUM QUANTITY TO ORDER 500 M

TUBAZIONI E RACCORDI

FITTINGS AND HOSES

TUBAZIONI RILSAN PA11 COLORE NEUTRO TEMPERATURA DA -40°C A +80°C				RILSAN HOSES PA11 NEUTRAL COLOR TEMPERATURE FROM -40 °C TO + 80 °C		
CODICE CODE	D2	D1	PESO WEIGHT	PRESSI ONE DI ESERCIZIO A 20 °C WORKING PRESSURE A 20 °C	PRESSI ONE DI SCOPPIO A 20 °C BURST PRESSURE AT 20 °C	MI NI MO RAGGIO DI CURVATURA MI NI MUM BENDI NG RADI US
	MM	MM	G/M	BARS	BARS	MM
30.156.0*	4	2	9.8	33	133	16
30.156.1*	4	2.5	8	23	92	24
30.156.2*	4	3	5.7	14	57	28
30.156.3*	6	3	22	33	133	25
30.156.4**	8	5	32	23	92	33
30.156.5**	10	6	52.2	25	100	90

* MINIMA QUANTITA' RDINABILE 1000 M	* MINIMUM QUANTITY TO ORDER 1000 M
** MINIMA QUANTITA' ORDINABILE 500 M	** MINIMUM QUANTITY TO ORDER 500 M

TUBAZIONI RILSAN PA11 COLORE NERO TEMPERATURA DA -40°C A +80°C				RILSAN HOSES PA11 BLACK COLOR TEMPERATURE FROM -40 °C TO + 80 °C		
CODICE CODE	D2	D1	PESO WEIGHT	PRESSI ONE DI ESERCIZIO A 20 °C WORKING PRESSURE AT 20 °C	PRESSI ONE DI SCOPPIO A 20 °C BURST PRESSURE AT 20 °C	MI NI MO RAGGIO DI CURVATURA MI NI MUM BENDI NG RADI US
	MM	MM	G/M	BARS	BARS	MM
30.156.0.N*	4	2	9.8	33	133	16
30.156.1.N*	4	2.5	8	23	92	24
30.156.2.N*	4	3	5.7	14	57	28
30.156.3.N*	6	3	22	33	133	25
30.156.4.N**	8	5	32	23	92	33
30.156.5.N**	10	6	52.2	25	100	90

* MINIMA QUANTITA' RDINABILE 1000 M	* MINIMUM QUANTITY TO ORDER 1000 M
** MINIMA QUANTITA' ORDINABILE 500 M	** MINIMUM QUANTITY TO ORDER 500 M

TUBAZIONI E RACCORDI

FITTINGS AND HOSES

TUBAZIONI RILSAN PA11 SR COLORE NEUTRO TEMPERATURA DA -40°C A +80°C				RILSAN HOSES PA11 SR NEUTRAL COLOR TEMPERATURE FROM -40 °C TO + 80 °C		
CODICE CODE	D2	D1	PESO WEIGHT	PRESSIONE DI ESERCIZIO A 20 °C WORKING PRESSURE AT 20 °C	PRESSIONE DI SCOPPIO A 20 °C BURST PRESSURE AT 20 °C	MINIMO RAGGIO DI CURVATURA MINIMUM BENDING RADIUS
	MM	MM	G/M	BARS	BARS	MM
30.157.0*	4	2	9.8	70	280	25
30.157.1*	4	2.5	8	48	193	36
30.157.2*	4	3	5.7	30	120	42
30.157.3*	6	3	22	70	280	36
30.157.4**	8	5	32	48	193.5	80
30.157.5**	10	6	52.2	52.5	210	135

* MINIMA QUANTITA' ORDINABILE 1000 M	* MINIMUM QUANTITY TO ORDER 1000 M
** MINIMA QUANTITA' ORDINABILE 500 M	** MINIMUM QUANTITY TO ORDER 500 M

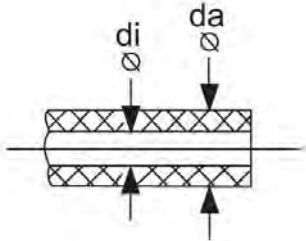
TUBAZIONI RILSAN PA11 SR COLORE NERO TEMPERATURA DA -40°C A +80°C				RILSAN HOSES PA11 SR BLACK COLOR TEMPERATURE FROM -40 °C TO + 80 °C		
CODICE CODE	D2	D1	PESO WEIGHT	PRESSIONE DI ESERCIZIO A 20 °C WORKING PRESSURE AT 20 °C	PRESSIONE DI SCOPPIO A 20 °C BURST PRESSURE AT 20 °C	MINIMO RAGGIO DI CURVATURA MINIMUM BENDING RADIUS
	MM	MM	G/M	BARS	BARS	MM
30.157.0.N*	4	2	9.8	70	280	25
30.157.1.N*	4	2.5	8	48	193	36
30.157.2.N*	4	3	5.7	30	120	42
30.157.3.N*	6	3	22	70	280	36
30.157.4.N**	8	5	32	48	193.5	80
30.157.5.N**	10	6	52.2	52.5	210	135

* MINIMA QUANTITA' ORDINABILE 1000 M	* MINIMUM QUANTITY TO ORDER 1000 M
** MINIMA QUANTITA' ORDINABILE 500 M	** MINIMUM QUANTITY TO ORDER 500 M

TUBO DI RAME			COPPER TUBE	
CODICE CODE	DIMENSIONE SIZE	PESO KG/ML WEIGHT KG/LM	BAR MAX MAX BAR	CONFEZIONE PACKAGE
30.200.1	4X3 MM	0.049	130	VENDITA IN ROTOLI PREZZO PER KG WE SALE IN ROLLS PRICE FOR KG
30.210.1	6X4 MM	0.140	200	
30.230.0	8X6 MM	0.196	130	
30.240.0	10X8 MM	0.252	100	
30.250.0	12X10 MM	0.308	70	

1 – TUBO ALTA PRESSIONE 840 BAR

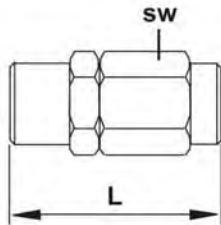
1 - HIGH PRESSURE HOSE 840 BAR



CODICE CODE		DI	DA
ZZZ100-001 **		4.0 MM	8.6 MM
ZZZ100-002	EMPTY	4.0 MM	8.6 MM
**FILLED WITH GREASE NLGI 2 - 50 M			
**RIEMPITO CON GRASSO NLGI 2 - 50 M			
MINIMUM QUANTITY 50 M FOR EACH ITEM			

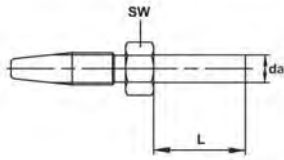
2 – GHIERA

2 -SCREW SLEEVE



CODICE CODE		L	SW
ZZZ100-050	4,1X8,75 MM	28	12
MINIMUM QUANTITY 100 PIECES FOR EACH ITEM			

3A – INSERTO DIRITTO

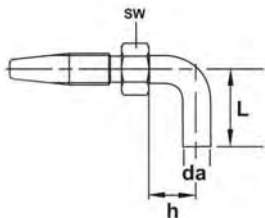


3A – STRAIGHT HOSE STUD



CODICE CODE		DA	L	SW
ZZZ100-054	6X20 MM	6	20	10
ZZZ100-051	6X30 MM	6	30	10
MINIMUM QUANTITY 100 PIECES FOR EACH ITEM				

3 – INSERTO A 90°

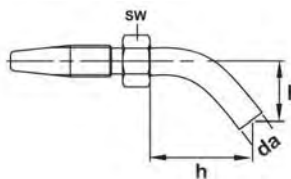


3 – 90° HOSE STUD



CODICE CODE		DA	H	L	SW
ZZZ100-052	6X21 MM	6	13	21	10
ZZZ100-053	6X37 MM	6	28	37	10
ZZZ100-056	6X53 MM	6	28	53	10
MINIMUM QUANTITY 100 PIECES FOR EACH ITEM					

3 – INSERTO A 45°



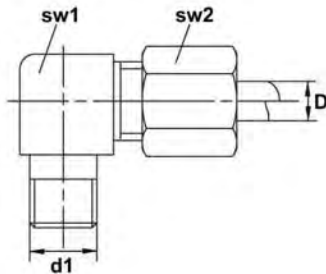
3 – 45° HOSE STUD



CODICE CODE		DA	H	L	SW
ZZZ100-057	6X24 MM	6	24	15	10
ZZZ100-058	6X35 MM	6	35	25	10
MINIMUM QUANTITY 100 PIECES FOR EACH ITEM					

RACCORDI A 90°

ELBOW FITTINGS

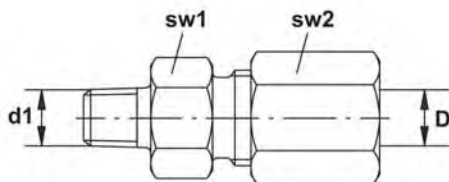


CODICE CODE	D	D1	Sw1	Sw2
ZZZ106-101	6	M 6 K	11	12
ZZZ106-102	6	M8X1 K	11	12
ZZZ106-103	6	M10X1 K	11	12
ZZZ106-104	6	R 1/8" BSP K	11	12
ZZZ106-105-L	6	R 1/4" BSP K	12	14
03.362.0	10	R 1/4" BSP K	14	19
03.361.0	8	R 1/4" BSP K	12	17

MINIMUM QUANTITY 50 PIECES FOR EACH ITEM

RACCORDI DIRITTI

STRAIGHT FITTINGS

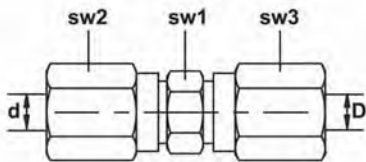


CODICE CODE	D	D1	Sw1	Sw2
ZZZ106-001	6	M 6 K	11	12
ZZZ106-002	6	M8X1 K	11	12
ZZZ106-003	6	M10X1 K	11	12
ZZZ106-004	6	R 1/8" BSP K	11	12
ZZZ106-005-L	6	R 1/4" BSP K	12	14
03.004.5	8	R 1/8" BSP K	12	14
03.365.1	8	R 1/4" BSP K	17	17
03.362.1	10	R 1/4" BSP K	17	19

MINIMUM QUANTITY 50 PIECES FOR EACH ITEM

RACCORDI TUBO-TUBO

TUBE-TUBE CONNECTOR

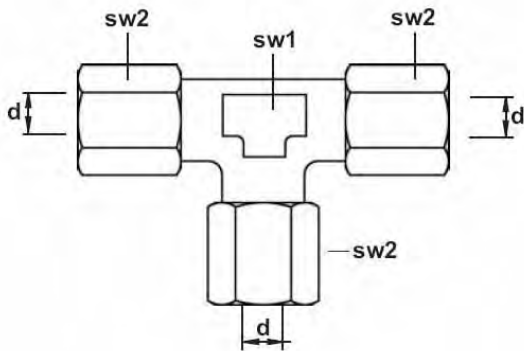


CODICE CODE	d	D	SW1	SW2	SW3
ZZZ104-000	4	4	9	10	10
ZZZ104-000-6	4	6	9	10	12
ZZZ106-000	6	6	11	12	12
ZZZ106-000-8	6	8	12	12	14
ZZZ106-000-10-L	6	10	17	14	19

MINIMUM QUANTITY 50 PIECES FOR EACH ITEM

T - TUBO/TUBO

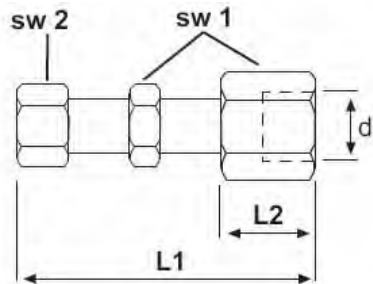
EQUAL TEE



CODICE CODE	d	SW1	SW2
ZZZ106-300	6	11	12
ZZZ106-300-L	6	12	14

MINIMUM QUANTITY 25 PIECES FOR EACH ITEM

PASSAPARETE M10X1 – 6L

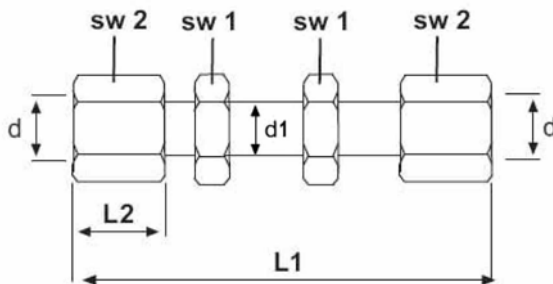


BULKHEAD M10X1 – 6L



CODICE CODE	d	L1	L2	SW1	SW2
ZZZ106-243-L	M10X1	66	20	17	14

PASSAPARETE TUBO 6 DIRITTO

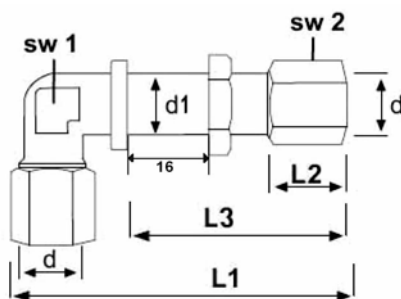


BULKHEAD STRAIGHT 6L



CODICE CODE	d	L1	L2	d1	SW1	SW2
ZZZ106-221-L	6	64	15	M12x1,5	17	14

PASSAPARETE TUBO 6 A 90°



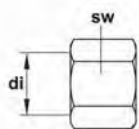
BULKHEAD ELBOW 6L



CODICE CODE	d	L1	L2	L3	d1	SW1	SW2
ZZZ106-231-L	6	68	15	42	M12x1,5	17	17

RACCORDO

COUPLING NUT

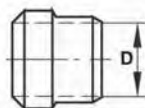


CODICE CODE	di	SW
ZZZ106-200	6	12

MINIMUM QUANTITY 100 PIECES FOR EACH ITEM

ANELLO DI SERRAGGIO

CUTTING RING

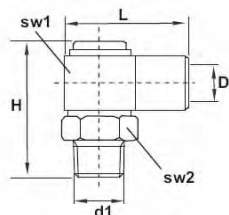


CODICE CODE	D
ZZZ106-210-ST	6

MINIMUM QUANTITY 100 PIECES FOR EACH ITEM

RACCORDI OSCILLANTI A 90°

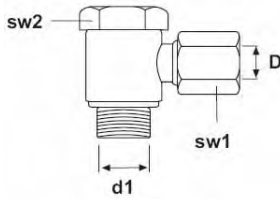
ELBOW BANJO FITTING FREELY MOVABLE



CODICE CODE	D	D1	SW1	SW2	H	L
ZZZ104-172	M8X1	M8X1	15	14	30	26,5
ZZZ104-173	M8X1	M10X1	15	14	30	26,5
ZZZ106-171	M10X1	M6X1	15	14	30	29
ZZZ106-172	M10X1	M8X1	15	14	30	29
ZZZ106-173	M10X1	M10X1	15	14	30	29
ZZZ106-174	M10X1	1/8"	15	14	30	29

MINIMUM QUANTITY 25 PIECES FOR EACH ITEM

RACCORDI BANJO

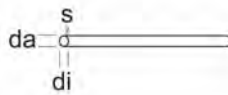


SWIVEL UNION



CODICE CODE	D	D1	SW1	SW2
ZZZ106-123	6	M10X1	12	14
ZZZ106-124	6	1/8"	12	14
MINIMUM QUANTITY 25 PIECES FOR EACH ITEM				

TUBI

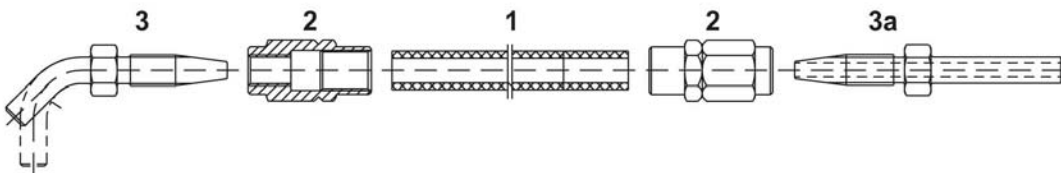


POLYAMIDE HOSE



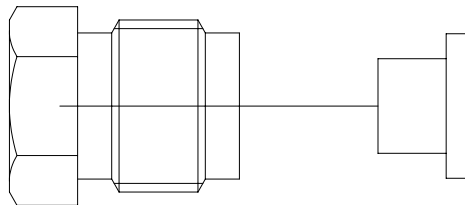
DIN 73378

CODICE CODE		DA	S	DI
ZZZ100-004**	HOSE 6x1.5 MM	6	1.5	3.0
** FILLED WITH SOFY GREASE NLGI 000 – 100 M				
** RIEMPITO CON GRASSELLO NLGI 000 – 100 M				
MINIMUM QUANTITY 100 M				



RACCORDI TUBO ACCIAIO, RAME E PLASTICA CON ANELLI
 PRESSIONE MASSIMA 300 BAR

NUT AND SLEEVE FITTINGS FOR STEEL, COPPER AND PLASTIC TUBING
 MAXIMUM PRESSURE 300 BAR

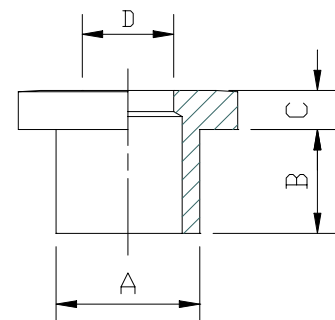


CODICE RACCORDO NUT CODE	CODICE ANELLO SLEEVE CODE	FILETTATURA THREAD	DIAMETRO ESTERNO TUBO OUTSIDE TUBE DIAMETER
04.051.0	06.051.0	M10X1	4
04.052.0	06.052.0	M10X1	6
04.053.0	06.053.0	M12X1	6
04.054.0	06.054.0	M12X1	8

ANELLO

SLEEVE

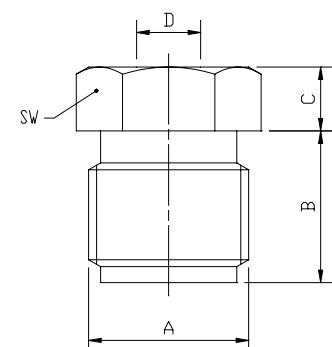
CODICE CODE	DIAMETRO ESTERNO TUBO OUTSIDE TUBE DIAMETER	A	B	C	D
06.051.0	4 MM	5.5	4	1.5	3.5
06.052.0	6 MM	7.3	4	1.5	5
06.053.0	6 MM	7.3	5.5	2.5	6.2
06.054.0	8 MM	9	5.5	2.5	8.2

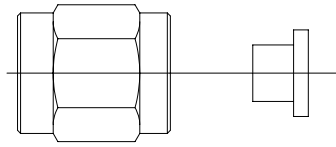


RACCORDO MASCHIO

MALE NUT

CODICE CODE	DIAMETRO ESTERNO TUBO OUTSIDE TUBE DIAMETER	A	B	C	D	SW
04.051.0	4 MM	M10X1	9.5	4	4.2	10
04.052.0	6 MM	M10X1	9.5	4	6.2	10
04.053.0	6 MM	M12X1	9.5	5.5	6.2	12
04.054.0	8 MM	M12X1	9.5	5.5	8.2	12



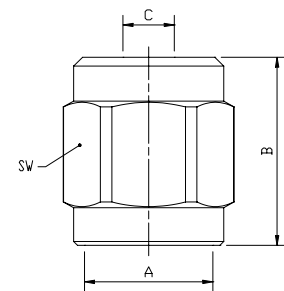


CODICE RACCORDO <i>NUT CODE</i>	CODICE ANELLO <i>SLEEVE CODE</i>	FILETTATURA <i>THREAD</i>	DIAMETRO ESTERNO TUBO <i>OUTSIDE TUBE DIAMETER</i>
04.071.0	06.051.0	M10X1	4
04.072.0	06.052.0	M10X1	6

RACCORDO FEMMI NA

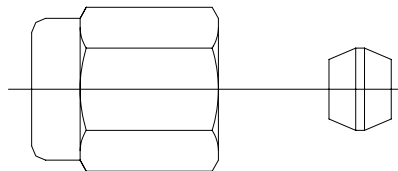
FEMALE NUT

CODICE <i>CODE</i>	DIAMETRO ESTERNO TUBO <i>OUTSIDE TUBE DIAMETER</i>	A	B	C	SW
04.071.0	4 MM	M10X1	15	4.2	12
04.072.0	6 MM	M10X1	15	6.2	12



RACCORDI TUBO ACCIAIO, RAME E PLASTICA CON
DOPPI CONI
PRESSIONE MASSIMA 150 BAR

NUT AND OLIVE FITTINGS FOR STEEL, COPPER AND PLASTIC
TUBING
MAXIMUM PRESSURE 150 BAR

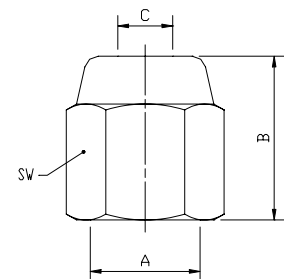


CODICE RACCORDO <i>NUT CODE</i>	CODICE BICONO <i>OLIVE CODE</i>	FILETTATURA <i>THREAD</i>	DIAMETRO ESTERNO TUBO <i>OUTSIDE TUBE DIAMETER</i>
04.001.0	06.002.0	5/16"	4

RACCORDO FEMMI NA

FEMALE NUT

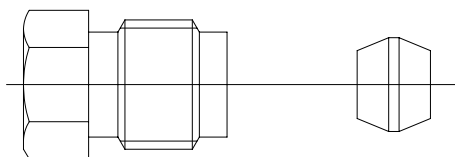
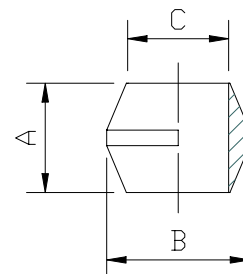
CODICE <i>CODE</i>	DIAMETRO ESTERNO TUBO <i>OUTSIDE TUBE DIAMETER</i>	A	B	C	SW
04.001.0	4 MM	5/16"	12	4.1	10



DOPPIO CONO

OLIVE

CODICE CODE	DIAMETRO ESTERNO TUBO OUTSIDE TUBE DIAMETER	A	B	C
06.002.0	4 MM	4.5	5.8	4.1
06.003.0	6 MM	5.5	8.4	6.1
06.004.0	8 MM	6	10.4	8.1

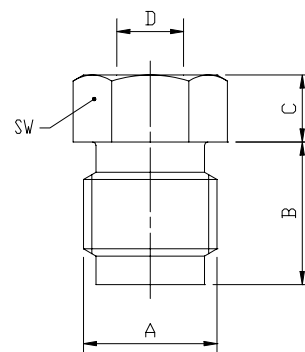


CODICE RACCORDO NUT CODE	CODICE BICONO OLIVE CODE	FILETTATURA THREAD	DIAMETRO ESTERNO TUBO OUTSIDE TUBE DIAMETER
04.102.0	06.002.0	5/16"	4
04.103.0	06.003.0	1/8"	6
04.104.0	06.004.0	1/4"	8
04.102.2	06.002.0	M8x1	4
04.060.0	06.003.0	M10x1	6
04.104.3	06.004.0	M14x1.5	8

RACCORDO MASCHIO

MALE NUT

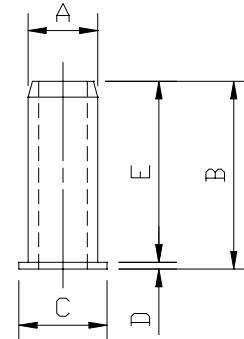
CODICE CODE	DIAMETRO ESTERNO TUBO OUTSIDE TUBE DIAMETER	A	B	C	D	SW
04.102.0	4 MM	5/16"	8.5	4	4.1	8
04.103.0	6 MM	1/8"	9.5	5	6.1	10
04.104.0	8 MM	1/4"	10.5	5.5	8.1	14
04.102.2	4 MM	M8X1	8.5	4	4.1	8
04.060.0	6 MM	M10X1	9.5	5	6.1	10
04.104.3	8 MM	M14X1.5	11.5	4.5	8.1	14



BUSSOLE DI RINFORZO TUBAZIONI

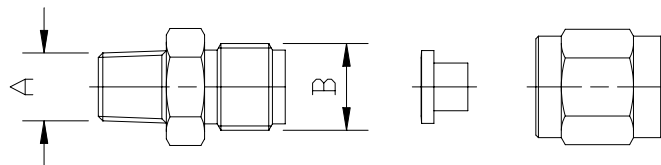
REINFORCING SOCKETS

CODICE CODE	PER TUBO Ø FOR TUBE Ø	A	B	C	D	E
03.400.0	4X2.5	2,5	8,3	3,8	0,3	8
03.401.0	4X3	3	8,3	3,8	0,3	8
03.402.0	6X4	4	10	5,8	0,3	9,7
03.403.0	8X6	6	12,5	7,9	0,3	12,2



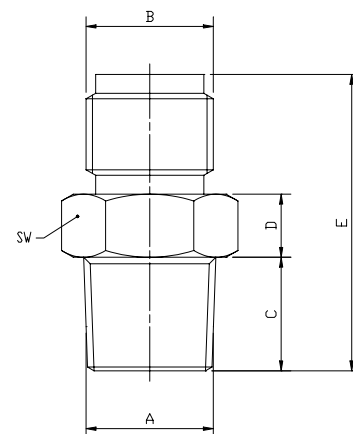
TERMINALI DIRITTI PER RACCORDI CON ANELLI

STRAIGHT ADAPTORS FOR NUT AND SLEEVE FITTINGS



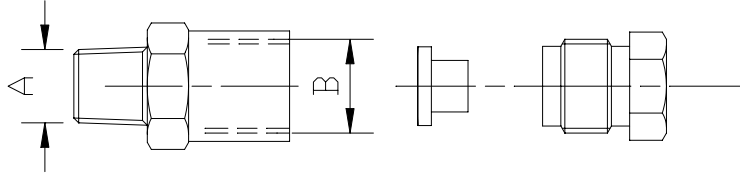
TERMINALE ADAPTOR	RACCORDO + ANELLO NUT + SLEEVE	A	B	DIAMETRO ESTERNO TUBO OUTSIDE TUBE DIAMETER
03.220.0	04.071.0 + 06.051.0	M8X1K	M10X1	4
03.220.0	04.072.0 + 06.052.0	M8X1K	M10X1	6
03.221.0	04.071.0 + 06.051.0	1/8"K	M10X1	4
03.221.0	04.072.0 + 06.052.0	1/8"K	M10X1	6
03.222.0	04.071.0 + 06.051.0	M10X1K	M10X1	4
03.222.0	04.072.0 + 06.052.0	M10X1K	M10X1	6
03.223.0	04.071.0 + 06.051.0	M6X1K	M10X1	4
03.223.0	04.072.0 + 06.052.0	M6X1K	M10X1	6
03.223.1	04.071.0 + 06.051.0	M6X0.75	M10X1	4
03.223.1	04.072.0 + 06.052.0	M6X075	M10x1	6

CODICE CODE	A	B	C	D	E	SW
03.220.0	M8X1	M10X1	8	4.5	22	12
03.221.0	1/8" G	M10X1	9	5	23.5	12
03.222.0	M10X1	M10X1	9	5	23.5	12
03.223.0	M6	M10X1	8	3	20.5	12
03.223.1	M6X0.75	M10X1	8	3	20.5	12



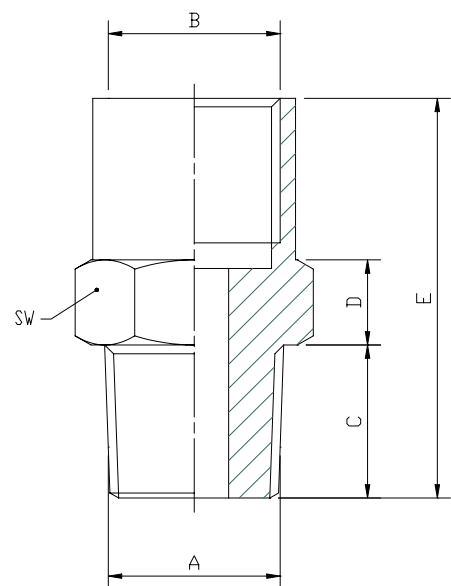
TERMINALI DI RITTI PER RACCORDI CON ANELLI

STRAIGHT ADAPTORS FOR NUT AND SLEEVE FITTINGS



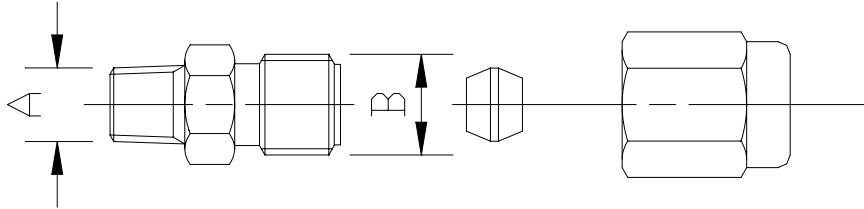
TERMINALE ADAPTOR	RACCORDO + ANELLO NUT + SLEEVE	A	B	DIAMETRO ESTERNO TUBO OUTSIDE TUBE DIAMETER
03.226.0	04.051.0 + 06.051.0	M8X1K	M10X1	4
03.226.0	04.052.0 + 06.052.0	M8X1K	M10X1	6
03.227.0	04.051.0 + 06.051.0	1/8"K	M10X1	4
03.227.0	04.052.0 + 06.052.0	1/8"K	M10X1	6
03.228.0	04.051.0 + 06.051.0	M10X1K	M10X1	4
03.228.0	04.052.0 + 06.052.0	M10X1K	M10X1	6
03.209.0	04.051.0 + 06.051.0	1/4"K	M10X1	4
03.209.0	04.052.0 + 06.052.0	1/4"K	M10X1	6
03.512.0	04.051.0 + 06.051.0	M10X1cil	M10X1	4
03.512.0	04.052.0 + 06.052.0	M10X1cil	M10X1	6
03.513.0	04.053.0 + 06.053.0	M10X1cil	M12X1	6
03.513.0	04.054.0 + 06.054.0	M10X1cil	M12X1	8
17.502.0	04.051.0 + 06.051.0	M12X1K	M10X1	4
17.502.0	04.052.0 + 06.052.0	M12X1K	M10X1	6

CODICE CODE	A	B	C	D	E	SW
03.226.0	M8x1	M10x1	9	5	23.5	12
03.227.0	1/8"	M10x1	9	5	23.5	12
03.228.0	M10x1	M10x1	9	5	23.5	12
03.209.0	1/4"	M10x1	10	8	20	14
03.512.0	M10x1	M10x1	16.5	4.5	29	15
03.513.0	M12x1	M22x1	16.5	4.5	29	15
17.502.0	M12x1	M10x1	14	5	26	14



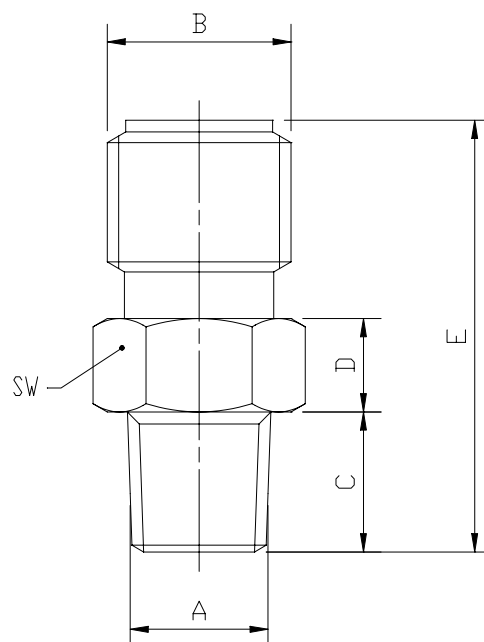
TERMINALI DIRITTI PER RACCORDI CON DOPPIO CONO

STRAIGHT ADAPTORS FOR NUT AND OLIVE FITTINGS



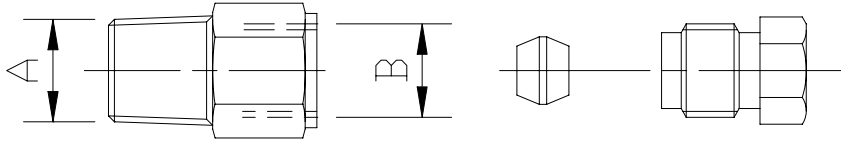
TERMINALE ADAPTORS	RACCORDO +ANELLO NUT + OLIVE	A	B	DIAMETRO ESTERNO TUBO OUTSIDE TUBE DIAMETER
03.265.0	04.001.0 + 06.002.0	M6X1	5/16"	4

CODICE CODE	A	B	C	D	E	SW
03.265.0	M6	5/16"	6	4	18.5	8



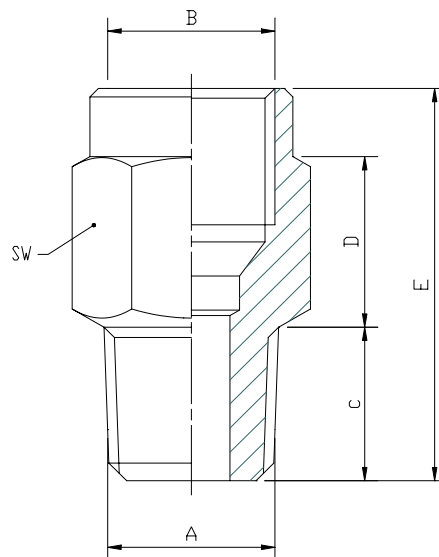
TERMINALI DIRITTI PER RACCORDI CON DOPPIO CONO

STRAIGHT ADAPTORS FOR NUT AND OLIVE FITTINGS



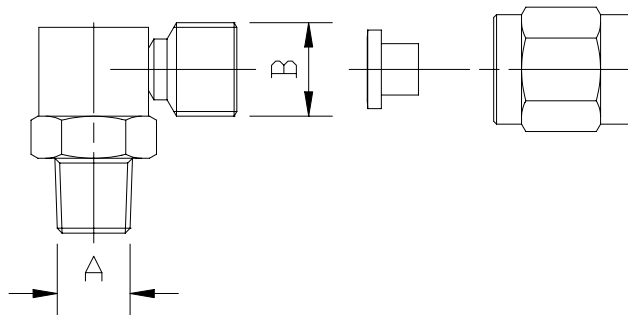
TERMINALE ADAPTORS	RACCORDO + ANELLO NUT + OLIVE	A	B	DIAMETRO ESTERNO TUBO OUTSIDE TUBE DIAMETER
03.202.1	04.102.0 + 06.002.0	1/8"K	5/16"	4
03.205.0	04.103.0 + 06.003.0	1/8"K	1/8"	6
03.204.0	04.102.0 + 06.002.0	1/4"K	5/16"	4
03.206.0	04.103.0 + 06.003.0	1/4"K	1/8"	6
03.208.0	04.104.0 + 06.004.0	1/4"K	1/4"	8
03.214.0	04.104.0 + 06.004.0	1/8"K	1/4"	8

CODICE CODE	A	B	C	D	E	SW
03.202.1	1/8"	5/16"	9	8	18	10
03.205.0	1/8"	1/8"	9	10	23	12
03.204.0	1/4"	5/16"	10	8	20	14
03.206.0	1/4"	1/8"	10	8	20	14
03.208.0	1/4"	1/4"	10	11	23	16
03.214.0	1/8"	1/4"	9	15	27	17



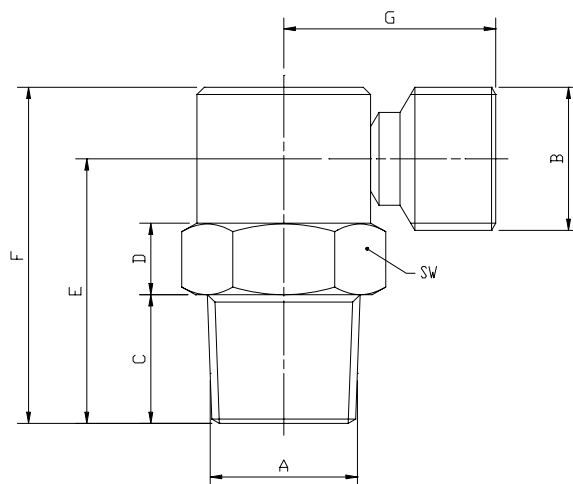
TERMINALI A 90° PER RACCORDI CON ANELLO

ELBOW ADAPTORS FOR NUT AND SLEEVE FITTINGS



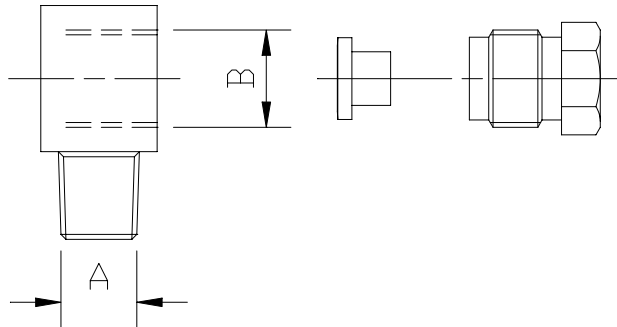
TERMINALE ADAPTORS	RACCORDO +ANELLO NUT + OLIVE	A	B	DIAMETRO ESTERNO TUBO OUTSIDE TUBE DIAMETER
03.260.0	04.071.0 + 06.051.0	M8X1K	M10X1	4
03.260.0	04.072.0 + 06.052.0	M8X1K	M10X1	6
03.261.0	04.071.0 + 06.051.0	1/8"K	M10X1	4
03.261.0	04.072.0 + 06.052.0	1/8"K	M10X1	6
03.262.0	04.071.0 + 06.051.0	M10X1K	M10X1	4
03.262.0	04.072.0 + 06.052.0	M10X1K	M10X1	6
03.263.0	04.071.0 + 06.051.0	M6X1K	M10X1	4
03.263.0	04.072.0 + 06.052.0	M6X1K	M10X1	6
03.264.0	04.071.0 + 06.051.0	M6X0.75K	M10X1	4
03.264.0	04.072.0 + 06.052.0	M6X0.75K	M10X1	6

CODICE CODE	C	D	E	F	G	SW
03.260.0	8	4.5	17.5	22	13	12
03.261.0	9	5	18.5	23.5	13	12
03.262.0	9	5	18.5	23.5	13	12
03.263.0	6	4.5	15.5	20	13	12
03.264.0	6	4.5	15.5	20	13	12



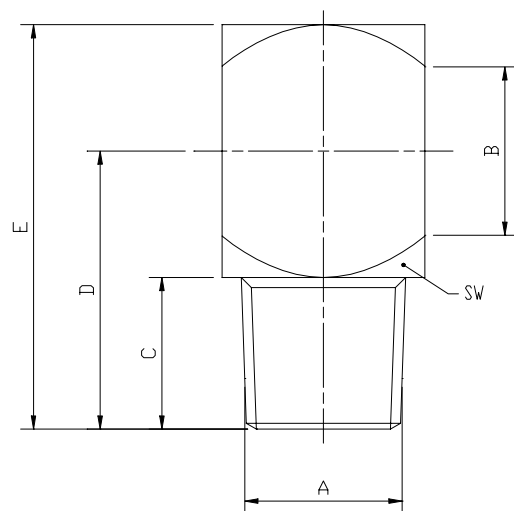
TERMINALI A 90° PER RACCORDI CON ANELLO

ELBOW ADAPTORS FOR NUT AND SLEEVE FITTINGS



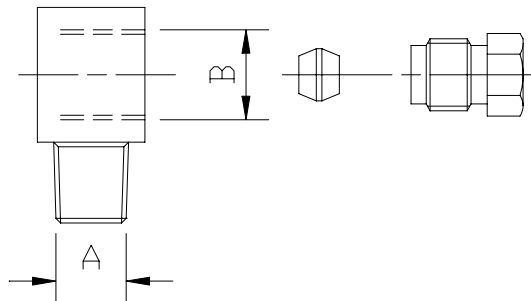
TERMINALE ADAPTOR	RACCORDO + ANELLO NUT + SLEEVE	A	B	DIAMETRO ESTERNO TUBO OUTSIDE TUBE DIAMETER
03.230.0	04.051.0 + 06.051.0	M8X1K	M10X1	4
03.230.0	04.052.0 + 06.052.0	M8X1K	M10X1	6
03.231.0	04.051.0 + 06.051.0	1/8"K	M10X1	4
03.231.0	04.052.0 + 06.052.0	1/8"K	M10X1	6
03.232.0	04.051.0 + 06.051.0	M10X1K	M10X1	4
03.232.0	04.052.0 + 06.052.0	M10X1K	M10X1	6
03.233.1	04.051.0 + 06.051.0	M12X1K	M10X1	4
03.233.1	04.052.0 + 06.052.0	M12X1K	M10X1	6
03.233.0	04.053.0 + 06.053.0	M12X1K	M12X1	6
03.233.0	04.054.0 + 06.054.0	M12X1K	M12X1	8

CODICE CODE	C	D	E	SW
03.230.0	9	16.5	24	12
03.231.0	9	16.5	24	12
03.232.0	9	16.5	24	12
03.233.1	9	18	26	15
03.233.0	9	18	26	15



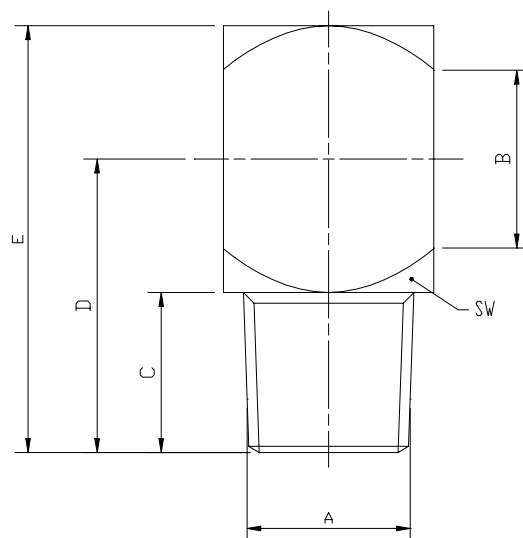
TERMINALI A 90° PER RACCORDI CON DOPPIO CONO

ELBOW ADAPTORS FOR NUT AND OLIVE FITTINGS



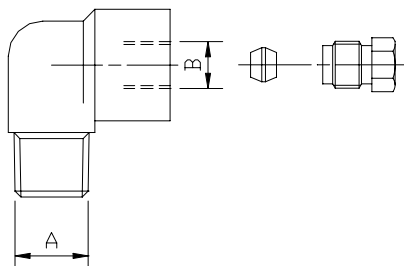
TERMINALE ADAPTOR	RACCORDO + ANELLO NUT + SLEEVE	A	B	DIAMETRO ESTERNO TUBO OUTSIDE TUBE DIAMETER
03.102.0	04.102.0 + 06.002.0	1/8"	5/16"	4
03.601.1	04.102.0 + 06.002.0	M8X1K	5/16"	4

CODICE CODE	C	D	E	SW
03.102.0	9	15	21	12
03.601.1	9	15	21	12



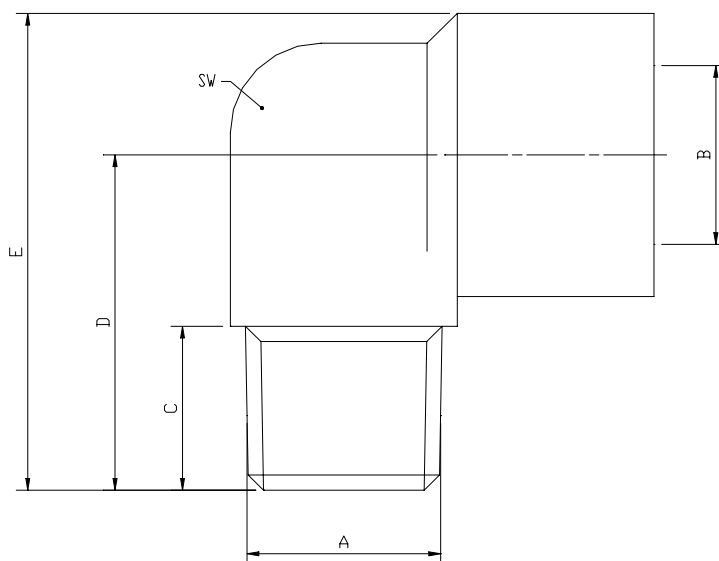
TERMINALI A 90° PER RACCORDI CON DOPPIO CONO

ELBOW ADAPTORS FOR NUT AND OLIVE FITTINGS



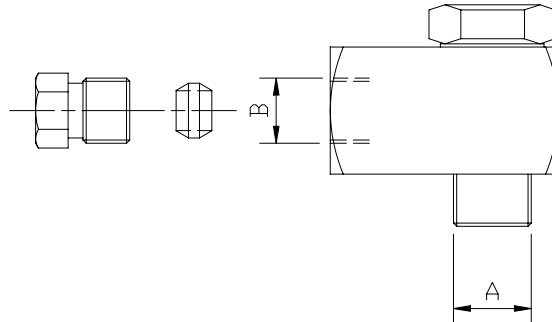
TERMINALE ADAPTOR	RACCORDO + ANELLO NUT + SLEEVE	A	B	DIAMETRO ESTERNO TUBO OUTSIDE TUBE DIAMETER
03.601.0	04.102.0 + 06.002.0	M8X1K	5/16"	4
03.501.0	04.102.0 + 06.002.0	1/8"K	5/16"	4
03.502.0	04.103.0 + 06.003.0	1/8"K	1/8"	6
03.503.0	04.104.0 + 06.004.0	1/4"K	1/4"	8
03.504.0	04.103.0 + 06.003.0	1/4"K	1/8"	6
03.505.0	04.102.0 + 06.002.0	1/4"K	5/16"	4
03.602.0	04.104.0 + 06.004.0	1/8"K	1/4"	8
03.509.0	04.053.0 + 06.053.0	M12X1K	M12X1	6
03.509.0	04.054.0 + 06.054.0	M12X1K	M12X1	8

CODICE CODE	C	D	E	SW
03.601.0	8	17	24	12
03.501.0	8	17	24	12
03.502.0	8	17	24	12
03.503.0	10	23	32	15
03.504.0	10	23	32	15
03.505.0	10	23	32	15
03.602.0	8	23	32	15
03.509.0	10	23	32	15



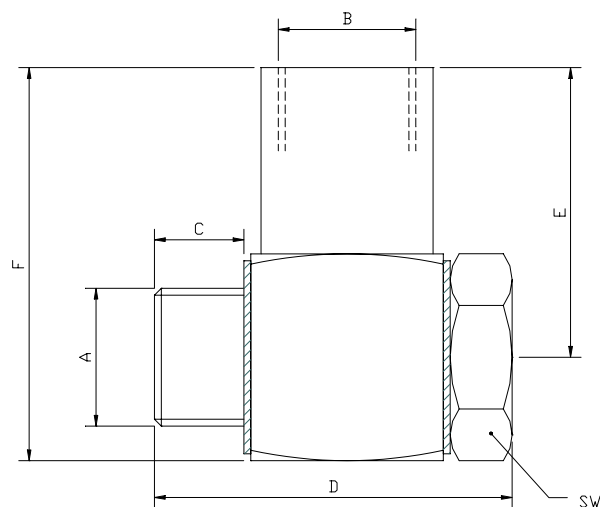
TERMINALI AD OCCHIELLO PER RACCORDI CON
DOPPIO CONO

BANJO CONNECTORS FOR NUT AND OLIVE FITTINGS



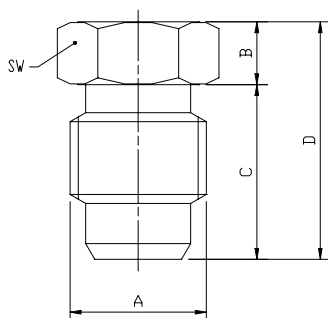
TERMINALE ADAPTOR	RACCORDO + ANELLO NUT + SLEEVE	A	B	DIAMETRO ESTERNO TUBO OUTSIDE TUBE DIAMETER
03.355.1	04.102.2 + 06.002.0	6x0.75	8x1	4
03.355.0	04.102.2 + 06.002.0	6X1	8X1	4
03.351.0	04.102.2 + 06.002.0	8X1	8X1	4
03.351.1	04.102.2 + 06.002.0	1/8"	8x1	4
03.350.0	04.060.0 + 06.003.0	10X1	10X1	6
03.519.3	04.060.0 + 06.003.0	12x1	10x1	6
03.519.4	04.104.3 + 06.004.0	12x1	14x1.5	8

CODICE CODE	C	D	E	F	SW
03.355.1	8.6	24	17	24	9
03.355.0	6.6	22	17	24	9
03.351.0	6	24	18	25	12
03.351.1	6.5	26	19	27	14
03.350.0	6.5	26	21	28.5	14
03.519.3	6	29.5	25	35	17
03.519.4	6	29.5	27	37	17

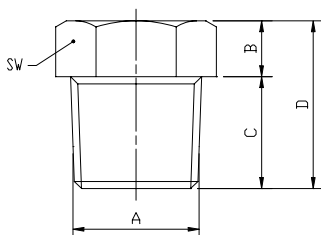


TAPPI MASCHI

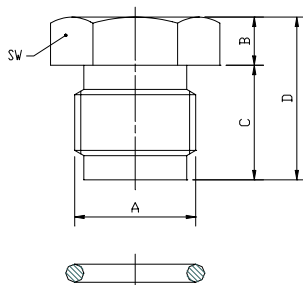
MALE PLUGS



CODICE CODE	A	B	C	D	SW
05.001.0	5/16"	3.5	12.5	16	8
05.003.0	1/8"	4.5	12.5	17	10
05.004.0	1 / 4"	5.5	14.5	20	14
05.012.0	M12x1	5.5	11.5	17	12



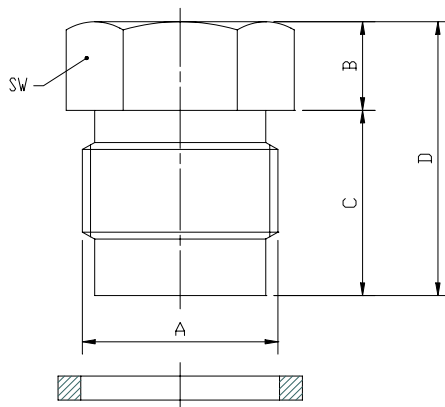
CODICE CODE	A	B	C	D	SW
05.001.1	1/8"	4	8	12	10



CODICE CODE	A	"O"-RING	B	C	D	SW
05.011.0	M10x1	02.636.0	4	9.5	13.5	12

TAPPI MASCHI

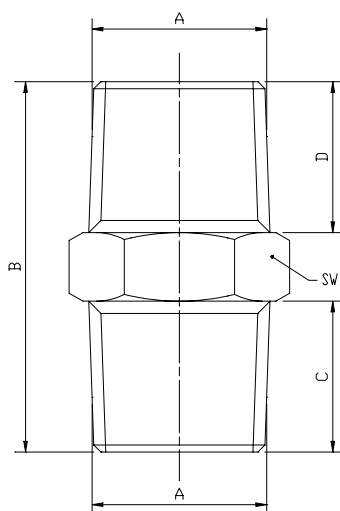
MALE PLUGS



CODICE CODE	RONDELLA WASHER	A	B	C	D	SW
05.001.2	A52.131016	M8x1	4	6	10	12
05.006.0	A73.131009	M10x1	5	7	12	12
05.013.0	A73.131004	M12x1	3	9	12	15

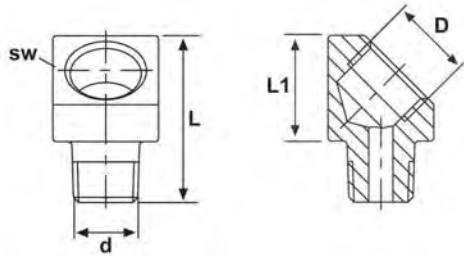
NIPPLI CONICI

CONIC NIPPLES



CODICE CODE	A	B	C	D	SW
03.000.5	1/8"	21	8	8	12
03.000.6	1 / 4"	27	11	11	14
A92.106068	3/8"	29	12	12	17

ADATTATORE 45°



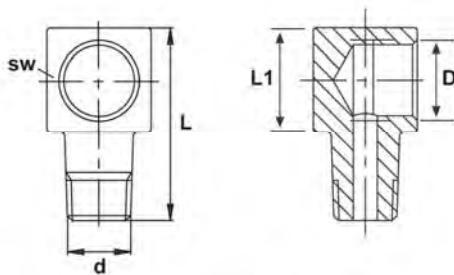
ADAPTER 45°



CODICE CODE	D	d	sw	L	L1
ZZZ100-822	M 8X1	M 8X1	13	23	13
ZZZ100-833	M 10X1	M 10X1	13	23	13
ZZZ100-844	R 1/8" BSP	R 1/8" BSP	13	23	13

MINIMUM ORDER 50 PIECES FOR EACH ITEM

ADATTATORE 90°



ADAPTER 90°

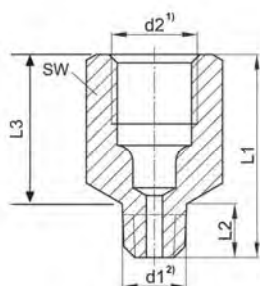


CODICE CODE	D	d	sw	L	L1
ZZZ100-721	M 8X1	M 6X1	12	23	13
ZZZ100-722	M 8X1	M 8X1	12	23	13
ZZZ100-723	M 8X1	M 10X1	12	23	13
ZZZ100-733 03.001.0	M 10X1	M 10X1	13	23	13
ZZZ100-744 03.232.0	R 1/8" BSP	R 1/8" BSP	13	23	13
ZZZ100-724	M 8X1	R 1/8" BSP	12	23	13

MINIMUM ORDER 50 PIECES FOR EACH ITEM

PROLUNGHE

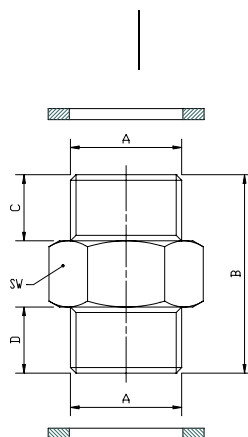
ADAPTER, EXTENSION PIECES



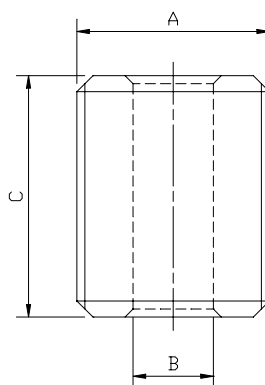
CODICE CODE	D1	D2	L1	L2	L3	SW	HOSE
ZZZ100-137	M8X1 K	M10X1	23	12	11	13	6
ZZZ100-142	M10X1 K	M10X1	18	7	11	13	6
ZZZ100-141	M10X1 K	M10X1	23	12	11	13	6
ZZZ100-145	M10X1 K	M10X1	35	24	11	13	6
ZZZ100-143	M10X1 K	M10X1	40	29	11	13	6
ZZZ100-146	M10X1 K	M10X1	50	39	11	13	6
ZZZ100-151	R1/8" K	M10X1	18	7	11	13	6
ZZZ100-152	R1/8" K	R 1/8"	18	7	11	13	6
ZZZ100-148	R1/8" K	R 1/8"	23	12	11	13	6
ZZZ100-149	R1/8" K	R 1/8"	35	23	12	13	6
ZZZ100-153	R1/8" K	R 1/8"	50	38	12	13	6
ZZZ100-130	M8X1 K	M8X1 K	18	8	10	11	4
ZZZ100-140	M10X1 K	M8X1 K	18	8	10	11	4
MINIMUM ORDER 50 PIECES FOR EACH ITEM							

NIPPLI CILINDRICI

CYLINDRICAL NIPPLES



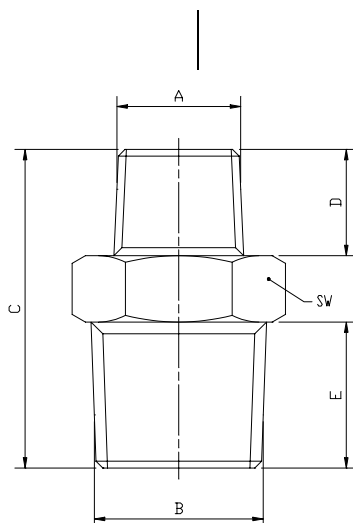
CODICE CODE	RONDELLA WASHER	A	B	C	D	SW
03.000.1	A73.131009	M10x1	18	6	6	12
03.000.2	A73.131004	M12x1	21	7	7	14
A92.106261	A92.114052	1 / 4"	31	12	12	19



CODICE CODE	A	B	C
03.000.2.TF	M12x1	5	15

NIPPLI DI RIDUZIONE

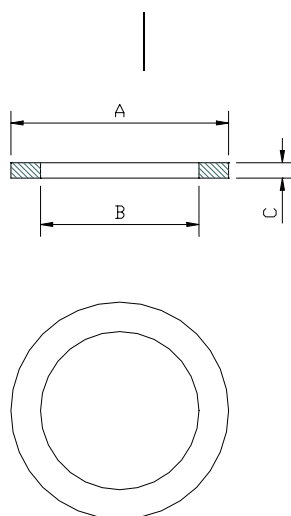
REDUCTION NIPPLES



CODICE CODE	A	B	C	D	E	SW
A92.106101	1/8"	3/8"	25	8	12	17
A92.106064	1/4"	3/8"	28	11	12	17
03.000.3	1/8"	1/4"	24	8	11	14

GUARNIZIONI IN RAME

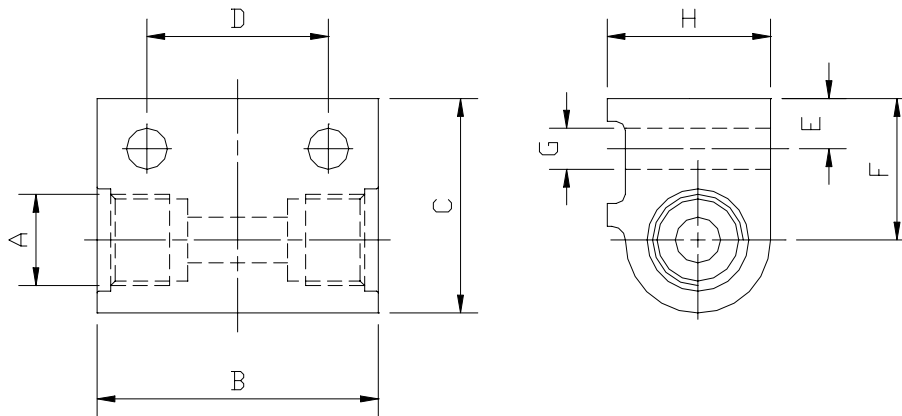
COPPER WASHERS



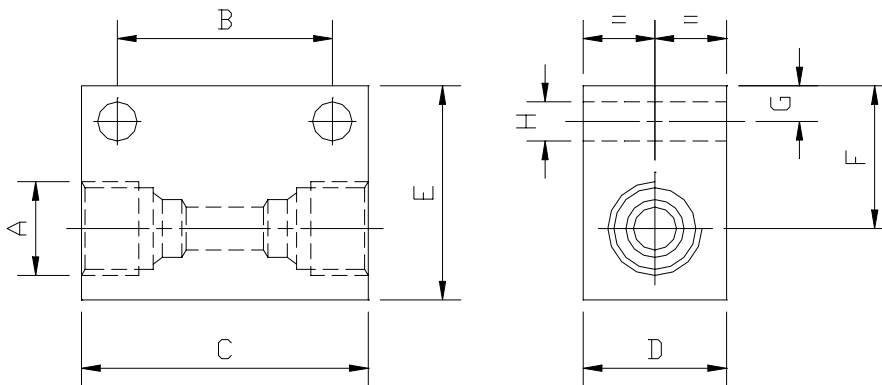
CODICE CODE	A	B	C
A52.131021	8.5	6	1
A52.131017	10	6	1
A52.131018	14	8	1
A52.131015	14	8	1.5
A52.131016	12	8.5	1
A77.131002	14	10	1.5
A73.131009	14	10.2	1
A73.131004	15	12	1.5
A52.131011	18	12	1
A92.114052	18	13.5	1.5
A52.131008	17	14.2	1.5
A77.131010	23	17	1.5

BLOCCHETTI DI COLLEGAMENTO DIRITTI

STRAIGHT ANCHOR BLOCK



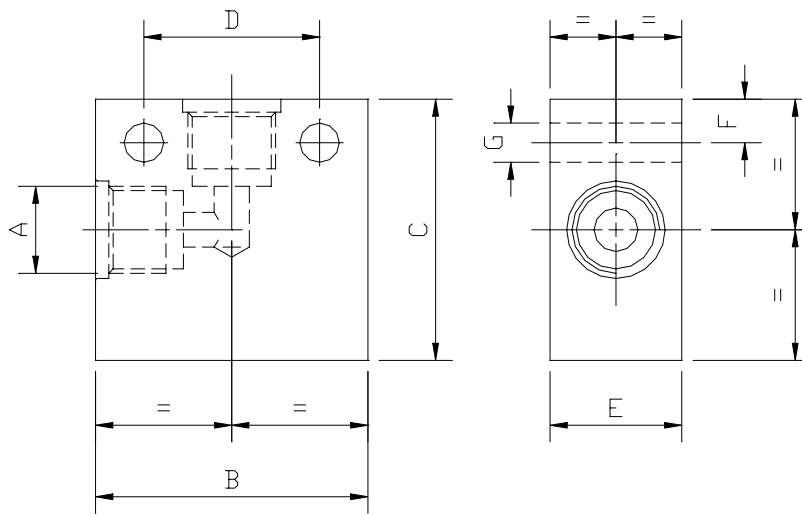
BLOCCHETTO BLOCK	RACCORDO + ANELLO NUT + SLEEVE	TUBO TUBE	A	B	C	D	E	F	G	H
01.831.3	04.051.0 + 06.051.0	4	M10X1	31	23.5	20	5.5	15.5	4.5	18
01.831.3	04.052.0 + 06.052.0	6	M10X1	31	23.5	20	5.5	15.5	4.5	18
01.902.0	04.103.0 + 06.003.0	6	1/8"	31	23	20	5.5	16.5	6.5	16



BLOCCHETTO BLOCK	RACCORDO + ANELLO NUT + SLEEVE	TUBO TUBE	A	B	C	D	E	F	G	H
01.902.3	04.104.0 + 06.004.0	8	1/4"	30	40	20	30	20	5	5.5

BLOCCHETTI DI COLLEGAMENTO A 90°

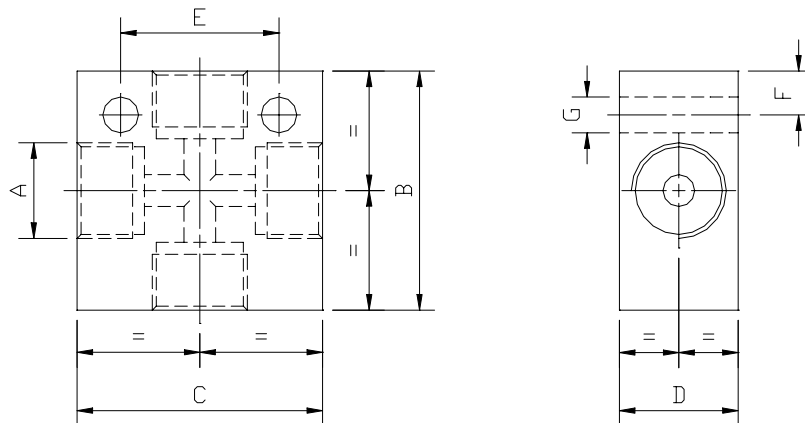
90° ANCHOR ELL



BLOCCHETTO BLOCK	RACCORDO + ANELLO NUT + SLEEVE	TUBO TUBE	A	B	C	D	E	F	G
01.831.4	04.051.0 + 06.051.0	4	M10X1	31	30	20	15	5	4.5
01.831.4	04.052.0 + 06.052.0	6	M10X1	31	30	20	15	5	4.5
01.151.1	04.103.0 + 06.003.0	6	1/8"	35	30	20	15	5.5	6.5
01.902.4	04.104.0 + 06.004.0	8	1/4"	40	30	30	20	5	5.5

BLOCCHETTI DI COLLEGAMENTO A CROCE

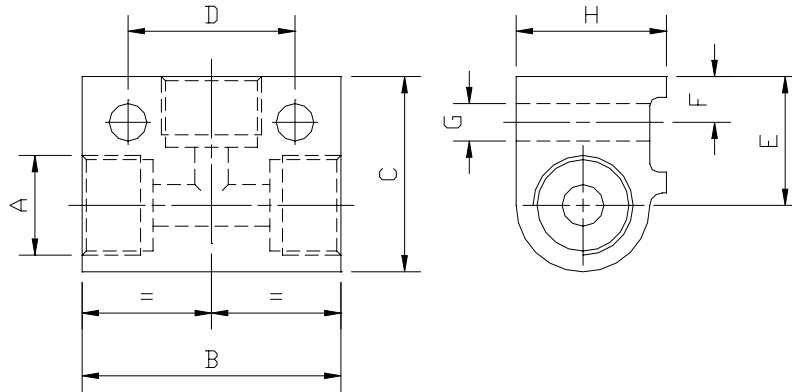
CROSS ANCHOR BLOCK



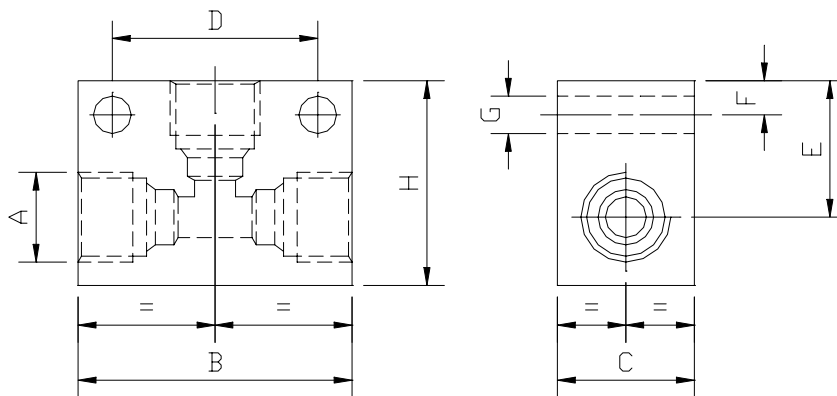
BLOCCHETTO BLOCK	RACCORDO + ANELLO NUT + SLEEVE	TUBO TUBE	A	B	C	D	E	F	G
01.831.2	04.051.0 + 06.051.0	4	M10X1	30	31	15	20	5.5	4.5
01.831.2	04.052.0 + 06.052.0	6	M10X1	30	31	15	20	5.5	4.5
01.903.1	04.103.0 + 06.003.0	6	1/8"	30	35	15	20	5.5	6.5
01.160.3	04.104.0 + 06.004.0	8	1/4"	40	40	20	30	5	5.5
01.547.0	04.053.0 + 06.053.0	6	M12x1	30	31	15	20	5.5	4.5
01.547.0	04.054.0 + 06.054.0	8	M12x1	30	31	15	20	5.5	4.5

BLOCCHETTI DI COLLEGAMENTO A "T "

"T" ANCHOR BLOCK

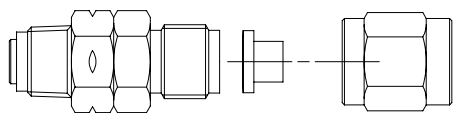


BLOCCHETTO BLOCK	RACCORDO + ANELLO NUT + SLEEVE	TUBO TUBE	A	B	C	D	E	F	G	H
01.831.1	04.051.0 + 06.051.0	4	M10X1	31	23.5	20	15.5	5.5	5.5	18
01.831.1	04.052.0 + 06.052.0	6	M10X1	31	23.5	20	15.5	5.5	5.5	18
01.903.0	04.103.0 + 06.003.0	6	1/8"	31	23	20	16.5	5.5	6.5	16
01.160.0	04.053.0 + 06.053.0	6	M12x1	31	23.5	20	15.5	5.5	4.5	18
01.160.0	04.054.0 + 06.054.0	8	M12x1	31	23.5	20	15.5	5.5	4.5	18

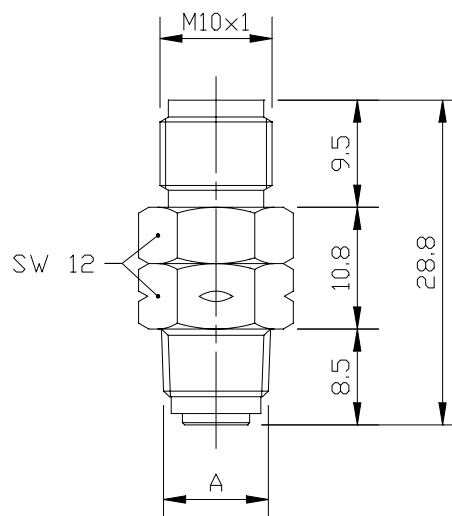


BLOCCHETTO BLOCK	RACCORDO + ANELLO NUT + SLEEVE	TUBO TUBE	A	B	C	D	E	F	G	H
01.160.2	04.104.0 + 06.004.0	8	1/4"	40	20	30	20	5	5.5	30

TERMINALI GIREVOLI DIRITTI
PRESSIONE MASSIMA 50 BAR

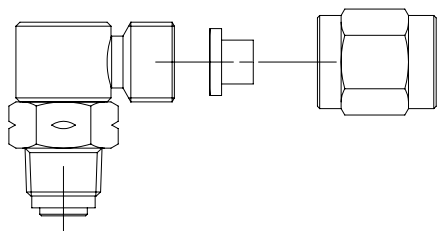


STRAIGHT OSCILLATING JOINT
MAXIMUM PRESSURE 50 BAR

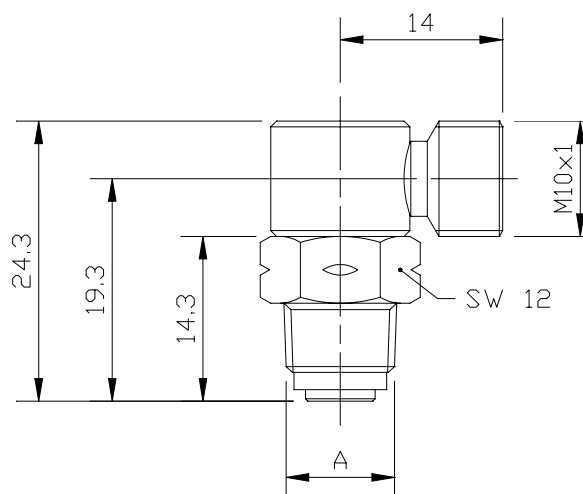


TERMINALE JOINT	RACCORDO+ANELLO NUT+SLEEVE	A	DIAMETRO ESTERNO TUBO OUTSIDE TUBE DIAMETER
09.015.0	04.071.0 + 06.051.0	1/8"	4
09.015.0	04.072.0 + 06.052.0	1/8"	6
09.015.1	04.071.0 + 06.051.0	M10X1	4
09.015.1	04.072.0 + 06.052.0	M10X1	6

TERMINALI GIREVOLI A 90°
PRESSIONE MASSIMA 50 BAR

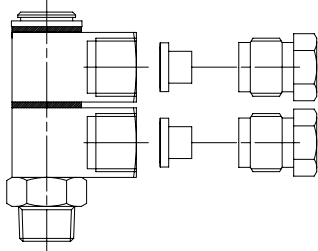


ELBOW OSCILLATING JOINT
MAXIMUM PRESSURE 50 BAR

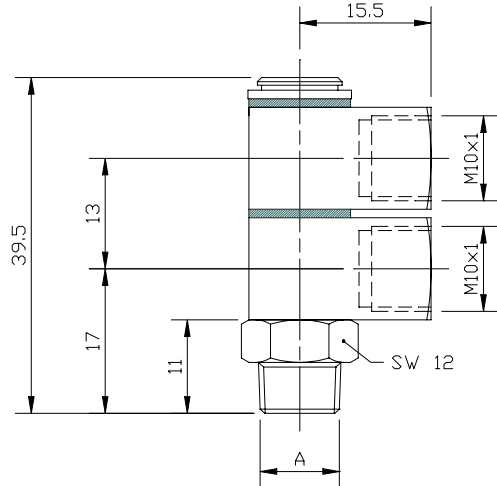


TERMINALE JOINT	RACCORDO+ANELLO NUT+SLEEVE	A	DIAMETRO ESTERNO TUBO OUTSIDE TUBE DIAMETER
09.016.0	04.071.0+06.051.0	1/8"	4
09.016.0	04.072.0+06.052.0	1/8"	6
09.016.2	04.071.0+06.051.0	M10X1	4
09.016.2	04.072.0+06.052.0	M10X1	6

TERMINALI GIREVOLI A 90° 2 VIE
PRESSIONE MASSIMA 50 BAR

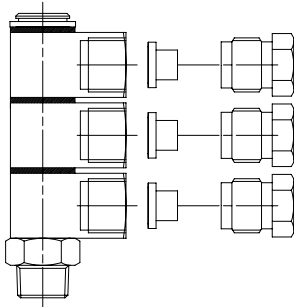


ELBOW OSCILLATING JOINT 2 WAYS
MAXIMUM PRESSURE 50 BAR

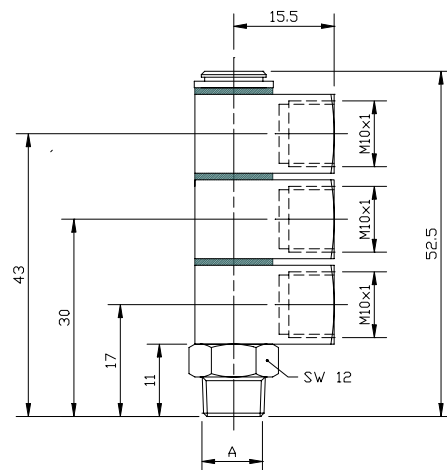


TERMINALE JOINT	RACCORDO+ANELLO NUT+SLEEVE	A	DIAMETRO ESTERNO TUBO OUTSIDE TUBE DIAMETER
09.020.0	04.051.0 + 06.051.0	1/8"	4
09.020.0	04.052.0 + 06.052.0	1/8"	6

TERMINALI GIREVOLI A 90° 3 VIE
PRESSIONE MASSIMA 50 BAR

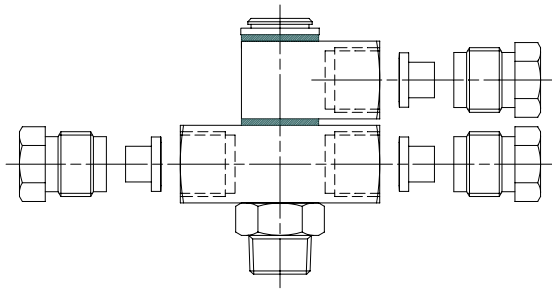


ELBOW OSCILLATING JOINT 3 WAYS
MAXIMUM PRESSURE 50 BAR

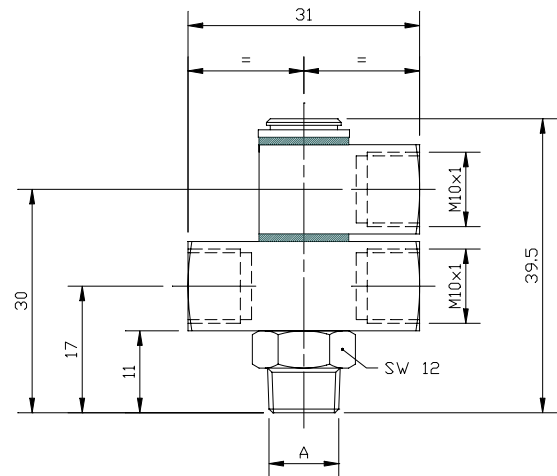


TERMINALE JOINT	RACCORDO+ANELLO NUT+SLEEVE	A	DIAMETRO ESTERNO TUBO OUTSIDE TUBE DIAMETER
09.023.5	04.051.0 + 06.051.0	1/8"	4
09.023.5	04.052.0 + 06.052.0	1/8"	6

TERMINALI GIREVOLI A 90° 3 VIE
PRESSIONE MASSIMA 50 BAR

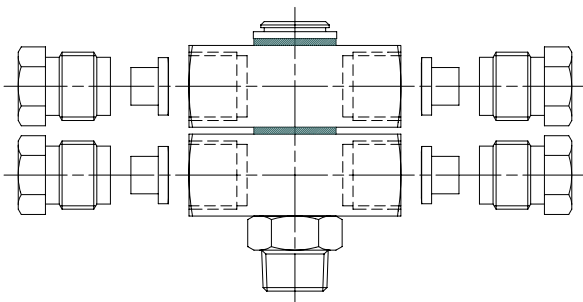


ELBOW OSCILLATING JOINT 3 WAYS
MAXIMUM PRESSURE 50 BAR

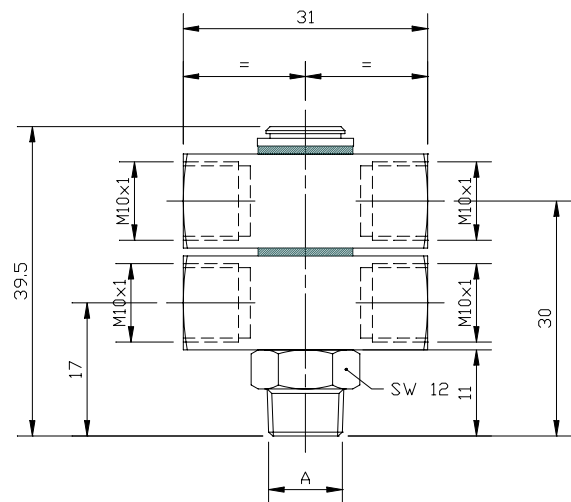


TERMINALE JOINT	RACCORDO+ANELLO NUT+SLEEVE	A	DIAMETRO ESTERNO TUBO OUTSIDE TUBE DIAMETER
09.023.4	04.051.0 + 06.051.0	1/8"	4
09.023.4	04.052.0 + 06.052.0	1/8"	6

TERMINALI GIREVOLI A 90° 4 VIE
PRESSIONE MASSIMA 50 BAR



ELBOW OSCILLATING JOINT 4 WAYS
MAXIMUM PRESSURE 50 BAR



TERMINALE JOINT	RACCORDO+ANELLO NUT+SLEEVE	A	DIAMETRO ESTERNO TUBO OUTSIDE TUBE DIAMETER
09.023.6	04.051.0 + 06.051.0	1/8"	4
09.023.6	04.052.0 + 06.052.0	1/8"	6

SPAZZOLE

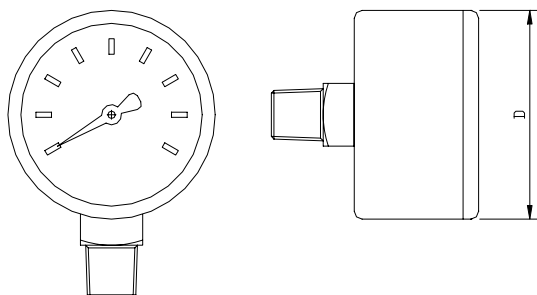
BRUSHES

CORPO	ALLUMINIO	CORPO	OTTONE
SETOLE	0,2 MM NYLON	SETOLE	0.6 MM NYLON
<i>BODY</i>	<i>ALUMINIUM</i>	<i>BODY</i>	<i>BRASS</i>
<i>BRISTLES</i>	<i>0,2 MM NYLON</i>	<i>BRISTLES</i>	<i>0.6 MM NYLON</i>
14.000.1		14.000.2	

CORPO	ACCIAIO	CORPO	ALLUMINIO
SETOLE	0,2 MM NYLON	SETOLE	0.3 MM NYLON
<i>BODY</i>	<i>STEEL</i>	<i>BODY</i>	<i>ALUMINIUM</i>
<i>BRISTLES</i>	<i>0,2 MM NYLON</i>	<i>BRISTLES</i>	<i>0.3 MM NYLON</i>
14.000.3		14.000.4	

MANOMETRI

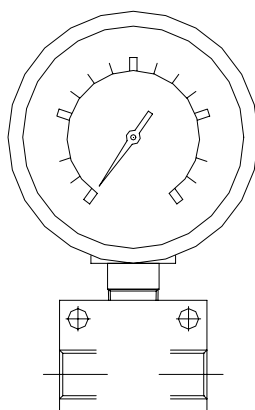
PRESSURE GAUGES



CODICE CODE	ATTACCO THREAD	SCALA BAR RANGE BAR	D
46.300.0	1/8" RADIALE - <i>RADIAL</i>	0-60	40
46.450.1	1/4" RADIALE - <i>RADIAL</i>	0-160	68
46.600.0	1/4" RADIALE - <i>RADIAL</i>	0-400	68
46.650.0	1/4" POSTERIORE - <i>REAR</i>	0-400	68

MANOMETRI CON BLOCCHETTO

PRESSURE GAUGES WITH ANCHOR BLOCK



CODICE CODE	SCALA BAR RANGE BAR	BLOCCHETTO ANCHOR BLOCK
46.702.0	0-160	3 VIE 1/4" 3 WAYS 1/4" (01.160.2)
46.702.2	0-400	3 VIE 1/4" 3 WAYS 1/4" (01.160.2)
46.703.0	0-400	4 VIE 1/4" 4 WAYS 1/4" (01.160.3)

FILTRI DI LINEA PER OLIO E GRASSO

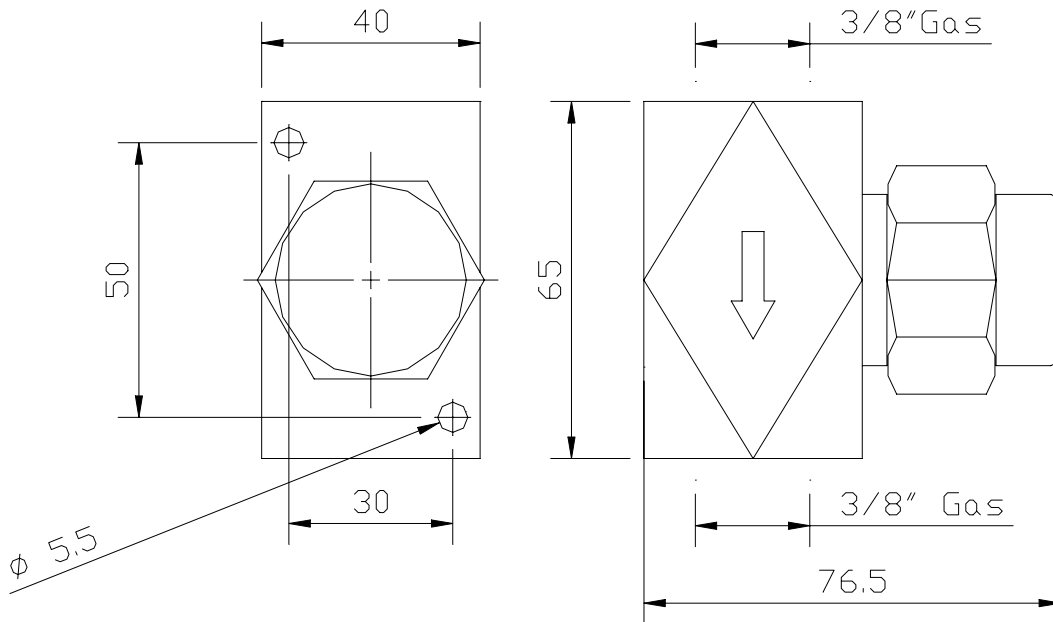
PRESSIONE MASSIMA DI ESERCIZIO 500 BAR

DIMENSIONI D'INGOMBRO

OIL AND GREASE LINE STRAINERS

WORKING MAXIMUM PRESSURE 500 BAR

OVERALL DIMENSION



CODICI ORDINAZIONE FILTRI PER OLIO

CODES TO ORDER OIL STRAINERS

CODICE CODE	MICRON	ATTACCO THREAD	CARTUCCIA DI RICAMBIO STRAINER ELEMENT
07.260.0	25	1/4"	07.262.0
07.260.1	40	1/4"	07.262.1
07.260.2	60	1/4"	07.262.2
07.260.3	125	1/4"	07.262.3
07.260.4	25	3/8"	07.262.0
07.260.5	40	3/8"	07.262.1
07.260.6	60	3/8"	07.262.2
07.260.7	125	3/8"	07.262.3

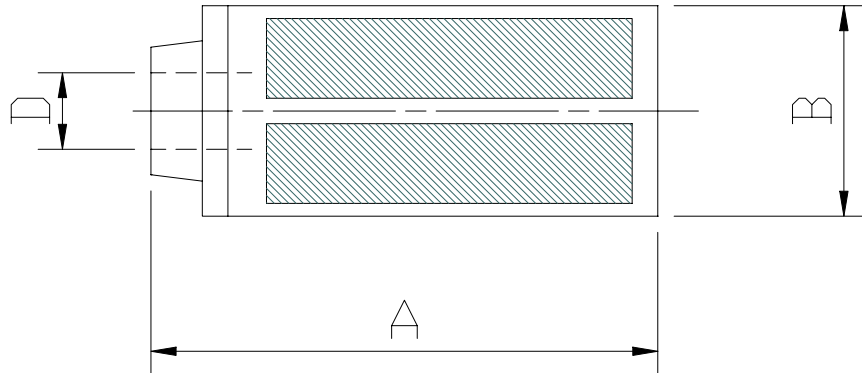
CODICI DI ORDINAZIONE FILTRI PER GRASSO

CODES TO ORDER GREASE STRAINERS

CODICE CODE	MICRON	ATTACCO THREAD	CARTUCCIA DI RICAMBIO STRAINER ELEMENT
07.261.0	150	1/4"	07.262.4
07.261.1	300	1/4"	07.262.5
07.261.2	150	3/8"	07.262.4
07.261.3	300	3/8"	07.262.5
07.261.4	150	1/2"	07.262.4
07.261.5	300	1/2"	07.262.5

FILTRI DI ASPIRAZIONE IN NYLON

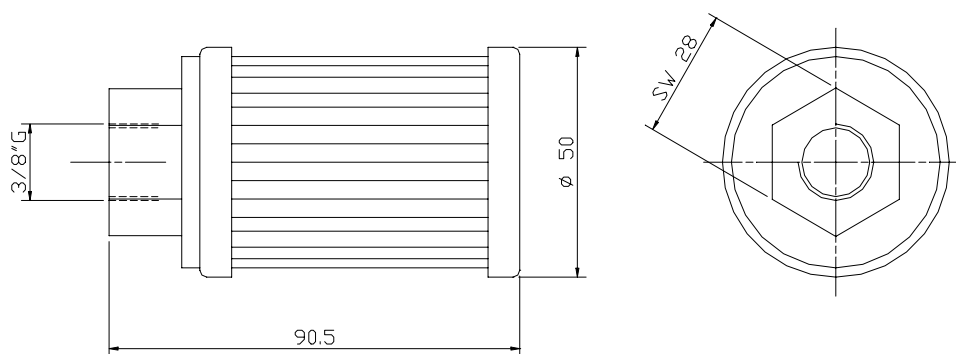
PLASTIC SUCTION STRAINERS



CODICE CODE	D	A	B	MICRON
07.200.0	4 MM	37	16	300
07.210.0	6 MM	37	16	300
07.220.0	8 MM	45	25	300
07.230.0	10 MM	45	25	300

FILTRI DI ASPIRAZIONE IN RETE METALLICA

METALLIC SUCTION STRAINERS



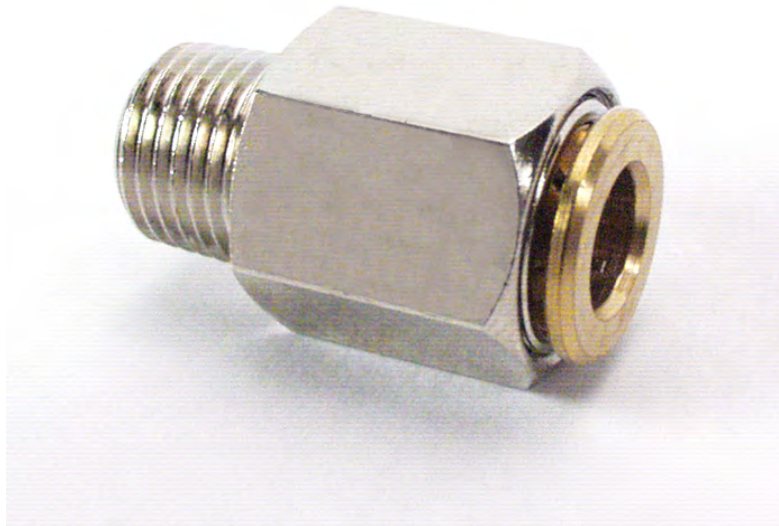
CODICE CODE	ATTACCO THREAD	MICRON
A93.086021	3/8"	60

SONO STATI REALIZZATI PER ESSERE MONTATI IN IMPIANTI DI LUBRIFICAZIONE CENTRALIZZATA FUNZIONANTI A OLIO O GRASSO PER SOSTITUIRE I RACCORDI A OGIVA.

CONNESSIONE E DISCONNESSIONE DEL TUBO POSSONO ESSERE RIPETUTE MOLTE VOLTE SENZA CHE CALINO LE PERFORMANCE DEL RACCORDO E SENZA CHE VENGA COMPROMESSA LA TENUTA DEL TUBO.

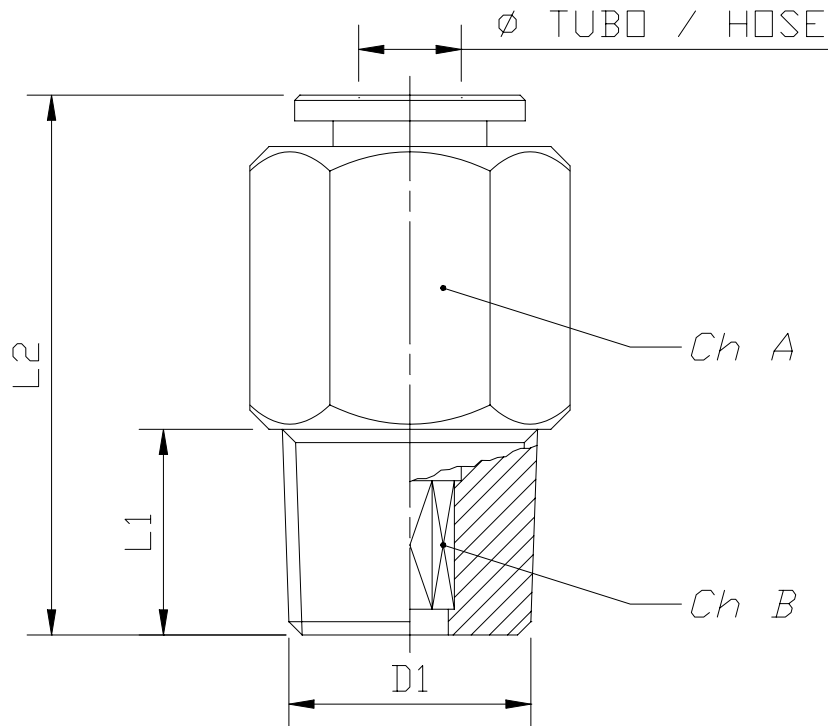
THEY ARE USED IN OIL OR GREASE LUBRICATION SYSTEMS INSTEAD OF THE STANDARD FITTINGS (NUT + OLIVE).

CONNECTION AND DISCONNECTION OF THE TUBE CAN BE REPEATED MANY TIMES WITHOUT ALTERING THE PERFORMANCE OF THE FITTING AND WITHOUT COMPROMISING THE SEALING OF THE TUBE.



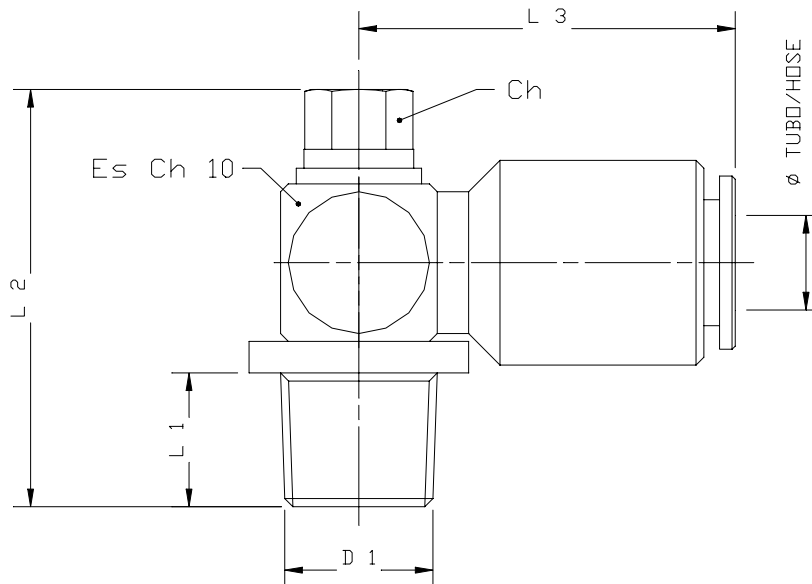
RACCORDI RAPIDI DI ALTA PRESSIONE DIRITTI

STRAIGHT HIGH PRESSURE PUSH-IN FITTINGS



CODICE CODE	Ø M	D1	L1	L2	Ch A	Ch B
03.257.5	4	5/16" 24 fil 1"	8.0	22	10	3.0
03.255.0	4	1/8" GAS	8.0	21	10	3.0
03.255.4	4	M 6x0.75	6.0	23	10	2.5
03.255.1	4	M 6x1	8.0	25	10	2.5
03.255.2	4	M 8x1	8.0	22	10	3.0
03.255.3	4	M 10x1	8.0	21	11	3.0
03.257.6	6	5/16" 24 fil 1"	8.0	28	12	4.0
03.256.0	6	1/8" GAS	8.0	26	12	4.0
03.257.4	6	1/4" GAS	11.0	26	14	4.0
03.256.1	6	M 6x1	8.0	28	12	2.5
03.256.2	6	M 8x1	8.0	28	12	4.0
03.256.3	6	M 10x1	8.0	24	12	4.0
03.256.4	6	M 12x1	9.0	25	13	4.0
CARATTERISTICHE			FEATURES			
CORPO	OTTONE NICHELATO		BODY		BRASS NICKEL-PLATED	
PRESSIONE DI LAVORO	250 BAR		WORKING PRESSURE		250 BAR	
PRESSIONE DI ROTTURA	SUPERIORE A 1000 BAR		BURST PRESSURE		OVER 1000 BAR	
TEMPERATURA	DA - 20 °C A + 120 °C		TEMPERATURE		FROM - 20°C TO +120°C	
LUBRIFICANTI	OLI E GRASSI		LUBRICANTS		OIL AND GREASE	
TENUTA INTERNA	NBR "O"-RING 90SH		INTERNAL SEAL		NBR "O"-RING 90SH	
TUBAZIONI CONSIGLIATE			SUGGESTED HOSES			
30.090.0	NYLON A.P. 4x2		30.090.0		NYLON A.P. 4x2	
30.160.0	NYLON A.P. 4x2.5		30.160.0		NYLON A.P. 4x2.5	
30.161.0	NYLON A.P. 6x3		30.161.0		NYLON A.P. 6x3	
30.330.0	TUBAZIONE S-30 5/32"		30.330.0		HOSE S-30 5/32"	

RACCORDI RAPIDI ORIENTABILI ALTA PRESSIONE A 90° | ELBOW HIGH PRESSURE BANJO PUSH-IN FITTINGS

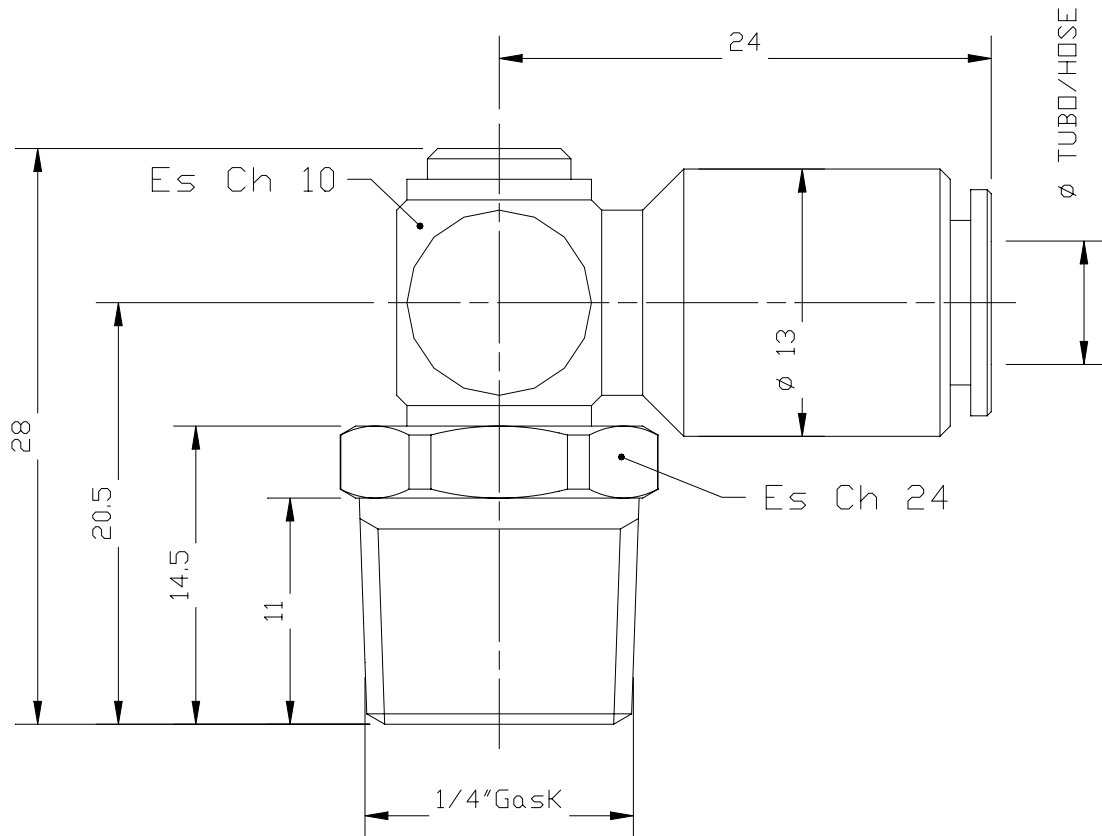


CODICE CODE	Ø M	D1	L1	L2	L3	Ch
03.257.7	4	5/16" 24 fil 1"	8.0	26	22	6
03.255.7	4	1/8" GAS	7.5	25	22	6
03.257.0	4	M 6x0.75	6.0	24	22	6
03.255.5	4	M 6x1	8.0	26	22	6
03.255.6	4	M 8x1	8.0	26	22	6
03.255.8	4	M 10x1	8.0	26	22	6
03.257.8	6	5/16" 24 fil 1"	8.0	26	24	6
03.256.6	6	1/8" GAS	7.5	25	24	6
03.256.5	6	M 6x1	8.0	26	24	6
03.257.1	6	M 8x1	8.0	26	24	6
03.256.7	6	M 10x1	8.0	26	24	6
03.256.8	6	M 12x1	9.0	26	24	6

CARATTERISTICHE		FEATURES	
CORPO	OTTONE NICHELATO	BODY	BRASS NICKEL-PLATED
PRESSIONE DI LAVORO	250 BAR	WORKING PRESSURE	250 BAR
PRESSIONE DI ROTTURA	900 BAR	BURST PRESSURE	900 BAR
TEMPERATURA	DA - 20 °C A + 120 °C	TEMPERATURE	FROM - 20°C TO +120°C
LUBRIFICANTI	OLI E GRASSI	LUBRICANTS	OIL AND GREASE
TENUTA INTERNA	NBR "O"-RING 90SH	INTERNAL SEAL	NBR "O"-RING 90SH
TUBAZIONI CONSIGLIATE		SUGGESTED HOSES	
30.090.0	NYLON A.P. 4x2	30.090.0	NYLON A.P. 4x2
30.160.0	NYLON A.P. 4x2.5	30.160.0	NYLON A.P. 4x2.5
30.161.0	NYLON A.P. 6x3	30.161.0	NYLON A.P. 6x3
30.330.0	TUBAZIONE S-30 5/32"	30.330.0	HOSE S-30 5/32"

RACCORDI RAPIDI ORIENTABILI ALTA PRESSIONE A 90°
 1/4" TUBO 6 MM
 CODICE 03.257.2

ELBOW HIGH PRESSURE BANJO PUSH-IN FITTINGS
 1/4" TUBE 6 MM
 CODE 03.257.2

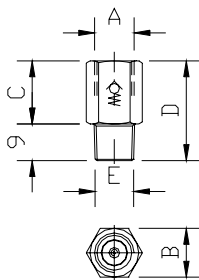


VALVOLE DI NON RITORNO PER DPA E DPM

Queste valvole sono normalmente inserite negli ingressi dei distributori e nelle uscite del distributore principale (master) allo scopo di evitare eventuali ritorni del lubrificante verso l'uscita principale del flusso che possono causare notevoli scompensi nelle portate dei distributori. Queste anomalie si possono verificare soprattutto alla presenza d'impianti estesi, tubazioni flessibili, grassi di notevole consistenza ed elevate contropressioni (in quest'ultimo caso consigliamo l'utilizzo delle valvole di non ritorno anche nelle uscite dei distributori secondari).

DPA AND DPM CHECK VALVES

These check valves have to be installed in the outlets of the primary progressive divider (master) and in the inlets of the secondary progressive dividers to avoid that the lubricant comes back to the main line. This is necessary when the main line is very long, there are flexible hoses, thick grease or back pressure from the point to be lubricated (in this case the check valves have to be installed in the outlets of the secondary progressive dividers too).



CODICI DI ORDINAZIONE

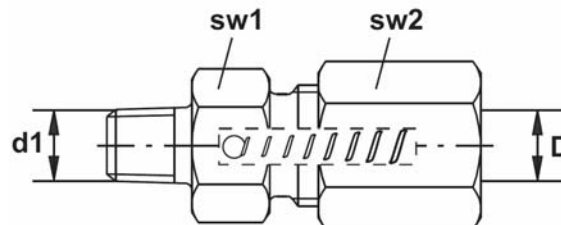
CODES TO ORDER

CODICE CODE	DESCRIZIONE DESCRIPTION	A	B	C	D	E
14.050.4	CV 1/8" INGRESSO DMP CV 1/8" DPM INLET	M10x1	CH 12	15.5	24.5	1/8" GK
14.050.6	CV M10x1 INGRESSO DPA CV M10x1 DPA INLET	M10x1	CH12	15.5	24.5	M10x1 K
14.050.8	CV M10x1 USCITA DPA/DPM CV M10x1 DPA/DPM OUTLET	M10x1	CH 12	15.5	24.5	M10x1 K

VALVOLA DI NON RITORNO COMPLETA DI RACCORDO PER TUBO DA 6 MM PER LE USCITE DEI DPA E DPM

CHECK VALVE COMPLETE OF FITTINGS FOR TUBE 6 MM FOR THE DPA AND DPM OUTLETS

CODICE/CODE	D1	D	SW1	SW2
ZZZ106-003-RVV	M10X1	6	11	12



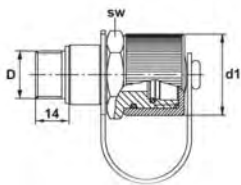
POMPA MANUALE E ADATTATORE PER RIEMPIRE LE
POMPE PEG

MANUAL PUMP AND ADAPTOR TO FILL THE PEG
PUMPS



CONNESSIONE DI RIEMPIMENTO

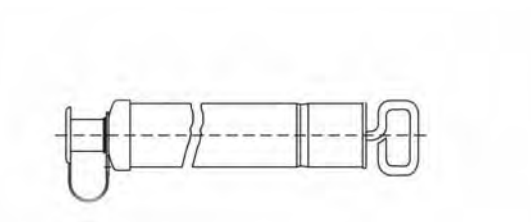
FILLING CONNECTION



CODICE CODE	D	SW
ZZZ100-208	M22X1.5	32

POMPA DI RIEPIMENTO

FILLING PUMP

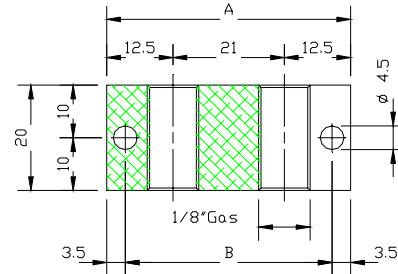


CODICE DI ORDINAZIONE	CODE TO ORDER	ZZZ100-201

BLOCCHI DI ANCORAGGIO



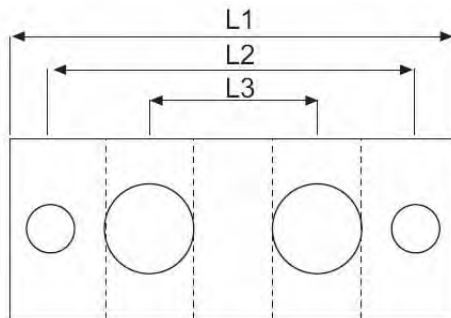
GREASING BLOCK



CODICE CODE	USCITE OUTLETS	A	B
01.110.1	1	25	18
01.110.2	2	46	39
01.110.3	3	67	60
01.110.4	4	88	81
01.110.5	5	109	102
01.110.6	6	130	123
01.110.7	7	151	144
01.110.8	8	172	165

MINIMUM ORDER 10 PIECES FOR EACH ITEM

BLOCCHI DI ANCORAGGIO A "T" M10X1



GREASING BLOCK "T" M10X1



CODICE CODE		L1	L2	L3
ZZZ100-211	1	30		
ZZZ100-212	2	60	50	22
ZZZ100-213	3	80	74	22
ZZZ100-214	4	106	96	22
ZZZ100-215	5	128	118	22
ZZZ100-216	6	150	140	22
ZZZ100-218	8	194	184	22

MINIMUM ORDER 10 PIECES FOR EACH ITEM

INGRASSATORI

GREASE NIPPLE

	CODICE	L	A	CH
	<i>CODE</i>			
	A70.078422	18	1/8" BSP	11

	CODICE	L	A	CH
	<i>CODE</i>			
	39.000.2	21	1/8" BSP	11

	CODICE	L	A	CH
	<i>CODE</i>			
	39.000.4	26.5	1/8" BSP	11

MINIMUM ORDER 100 PIECES FOR EACH ITEM

CAVO ELETTRICO

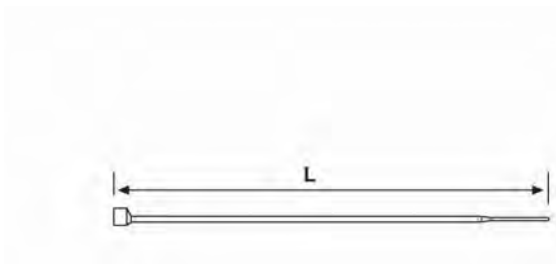
ELECTRICAL CABLE



CODICE CODE	
A91.111215	4X1 MM
A70.094128	5 M 4X1 MM
A70.094129	10 M 4X1 MM

FASCETTE

HOSE STRAP



CODICE CODE	L	
A91.111273	380	x4,7
A91.111274	200	x3.5
<i>MINIMUM QUANTITY 100 PIECES FOR EACH ITEM</i>		

SPIRALE DI PROTEZIONE



PLASTIC ELIX



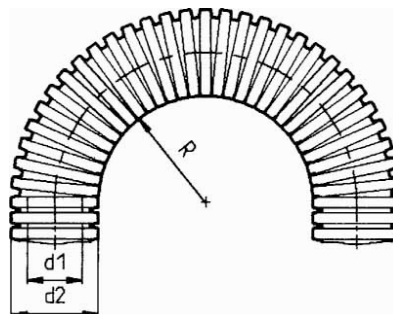
CODICE CODE		A	DA	S
ZZZ100-040		10	6	1
ZZZ100-041		10	11.5	1.5
30.326.0	12x8	15	12	2
30.326.1	16x12	15	16	2
30.326.2	20x16	15	20	2

MINIMUM QUANTITY 50 M FOR EACH ITEM

GUAINA DI PROTEZIONE APRIBILE



CONDUIT FLEXIBLE, DIVISIBLE

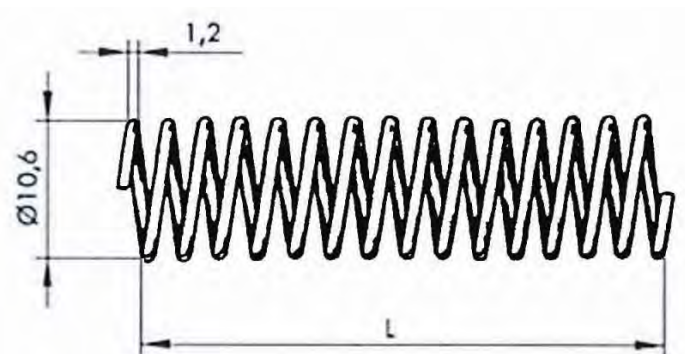


CODICE CODE	D1	D2	R
ZZZ1212079	6,9	10	11

MINIMUM QUANTITY ROLLS 50 M

SPIRALE METALLICA DI PROTEZIONE

METALLIC PROTECTION



CODICE CODE	L
ZZZ00208210	6 M

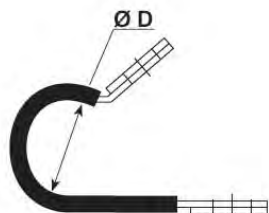
TUBI ACCIAIO

STEEL TUBE

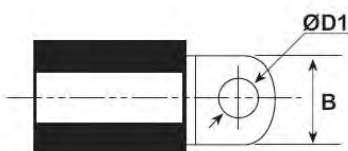


CODICE CODE	L	DA	S	DI
ZZZTC6/4/1	6 M	6	1	4
ZZZTC10/5/2.5	6 M	10	2.5	5

FASCETTE SALVATUBO

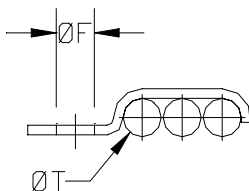
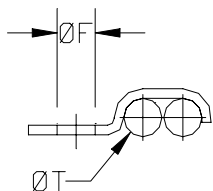
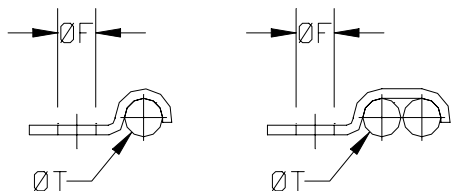


TUBE CLAMP

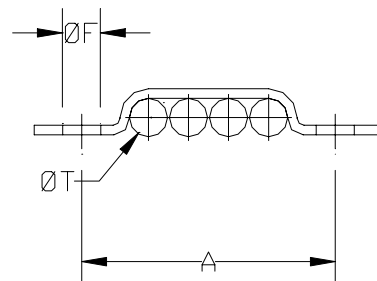


CODICE CODE	Ø D	Ø D1	B
ZZZ100-506	6 mm	5,3	12
ZZZ100-509	9 mm	5,3	12
ZZZ100-512	12 mm	5,3	12
ZZZ100-515	15 mm	5,3	12
ZZZ100-518	18 mm	5,3	12
ZZZ100-522	22 mm	5,3	12
ZZZ100-525	25 mm	5,3	12
ZZZ100-606	6 mm	6,4	15
ZZZ100-609	9 mm	6,4	15
ZZZ100-610	10 mm	6,4	15
ZZZ100-612	12 mm	6,4	15
ZZZ100-615	15 mm	6,4	15
ZZZ100-618	18 mm	6,4	15
ZZZ100-620	20 mm	6,4	15
ZZZ100-622	22 mm	6,4	15
ZZZ100-625	25 mm	6,4	15

FASCETTE FISSATUBO



FIXING CLAMPS



CODICE CODE	PER TUBO Ø T FOR TUBE Ø T	NUMERO TUBI TUBES NUMBER	Ø	A
08.101.0	4	1	4	-
08.102.0	4	2	4	-
08.103.0	4	3	4	-
08.104.0	4	4	4	28
08.105.0	4	5	4	32
08.106.0	4	6	4	36
08.206.0	6	1	5,5	-
08.206.1	6	2	5,5	-
08.208.0	8	1	5,5	-
08.208.1	8	2	5,5	-
08.210.0	10	1	5,5	-
08.212.0	12	1	5,5	-

VITI DI FISSAGGIO

CLAMPING SCREWS

CODICE CODE	A	B	C	
15.013.0	4	7	13	
15.023.0	5	8,5	23	

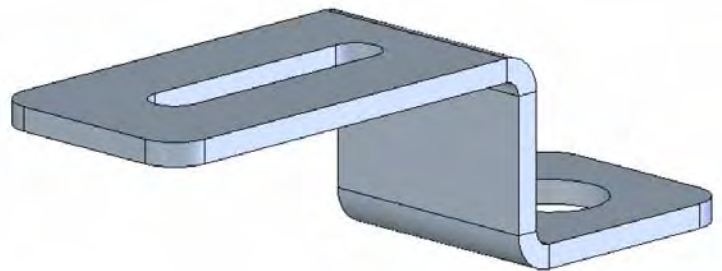
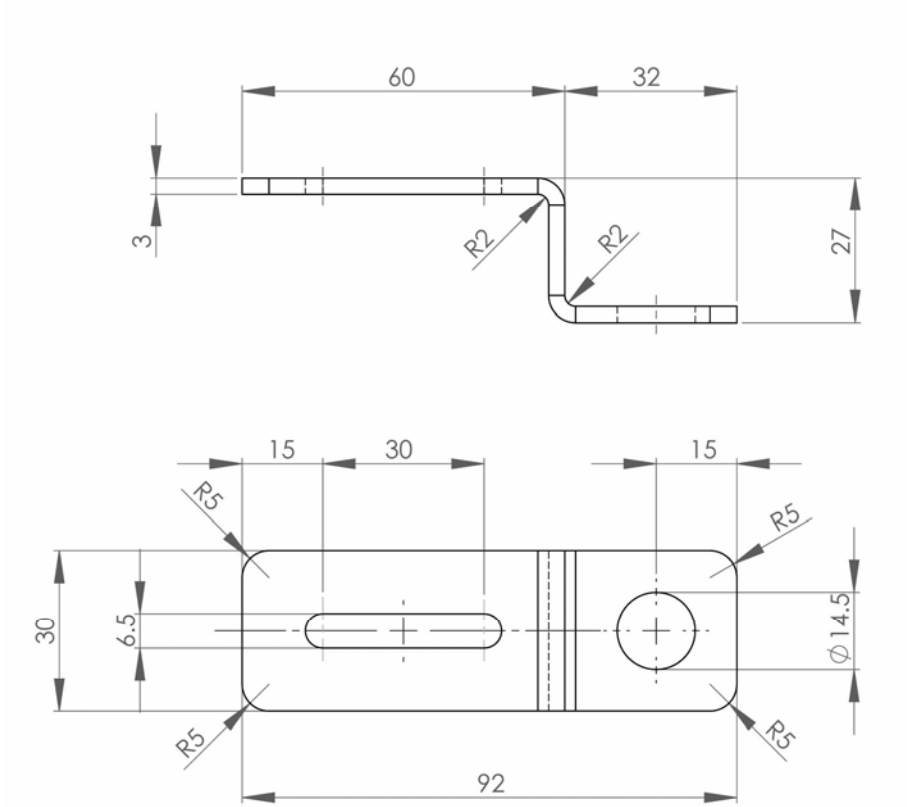
RIVETTI

RIVETS

CODICE CODE	A	B	C	
16.080.0	3,5	6	8	
16.065.0	3,5	6	6,5	

STAFFA A "Z" SUPPORTO
DISTRIBUTORI PROGRESSIVI

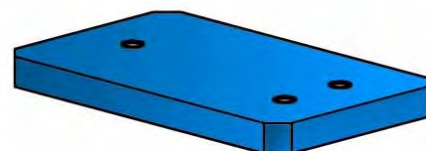
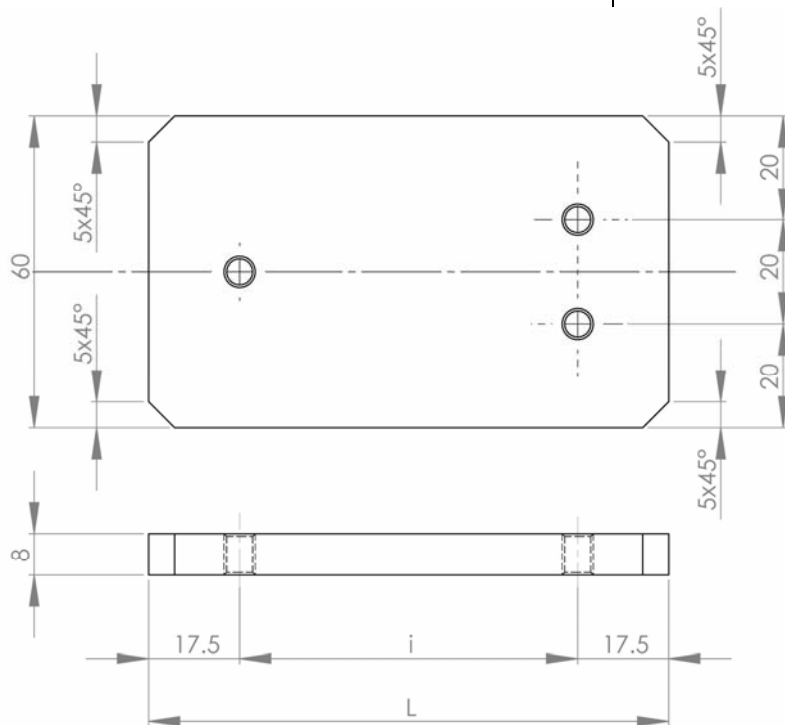
"Z" MOUNTING BRACKET
FOR PROGRESSIVE DIVIDERS



CODICE CODE		FORO HOLE					
08.112.0		$\varnothing 14.5$					

STAFFA A SALDARE
PER DISTRIBUTORI PROGRESSIVI

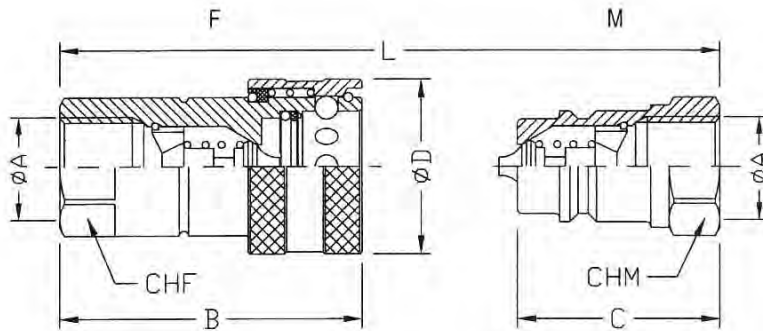
WELDING MOUNTING PLATE
FOR PROGRESSIVE DIVIDERS



CODICE CODE	DESCRIZIONE DESCRIPTION	DPA	DPM	DPX	L	i
08.113.0.03	STAFFA / PLATE	3	3, 4, 5	3, 4, 5	100	65
08.113.0.04	STAFFA / PLATE	4	6	6	120	85
08.113.0.05	STAFFA / PLATE	5	7, 8	7, 8	140	105
08.113.0.06	STAFFA / PLATE	6	9	9	160	125
08.113.0.07	STAFFA / PLATE	7	10	10	180	145
08.113.0.08	STAFFA / PLATE	8		11, 12	200	165
08.113.0.09	STAFFA / PLATE	9			220	185
08.113.0.10	STAFFA / PLATE	10			240	205
08.113.0.11	STAFFA / PLATE	11			260	225
08.113.0.12	STAFFA / PLATE	12			280	245
08.113.0.13	STAFFA / PLATE	13			300	265
08.113.0.14	STAFFA / PLATE	14			320	285
08.113.0.15	STAFFA / PLATE	15			340	305

INNESTO RAPIDO A DOPPIO OTTURATORE

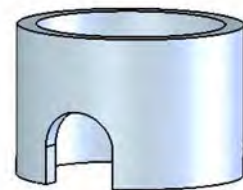
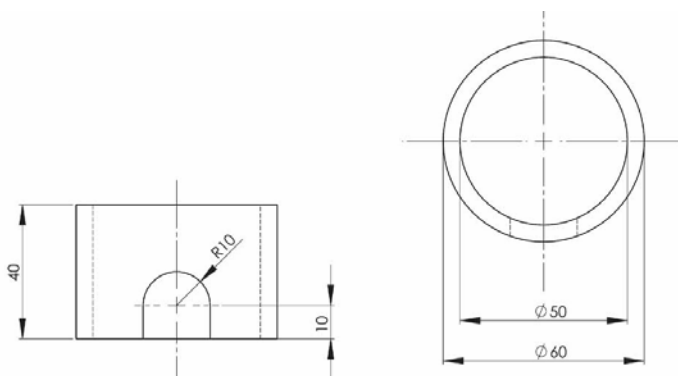
DOUBLE SHUT-OFF QUICK COUPLINGS



CODICE CODE	ØA	B	C	ØD	L	CHF	CHM
04.900.6	1/4" (F)	50		27	66	19	
04.900.9	1/4" (M)		33		66		19
04.900.5	1/8" (F)	50		23	63	18	
04.900.8	1/8" (M)		31,5		63		17

ANELLO DI PROTEZIONE A SALDARE

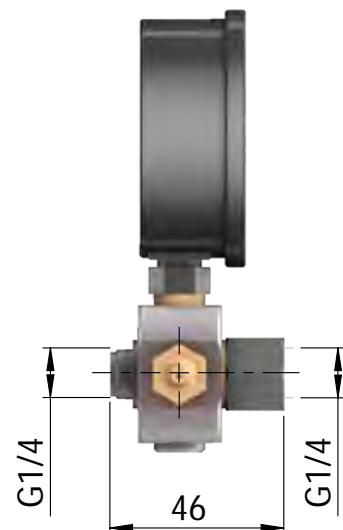
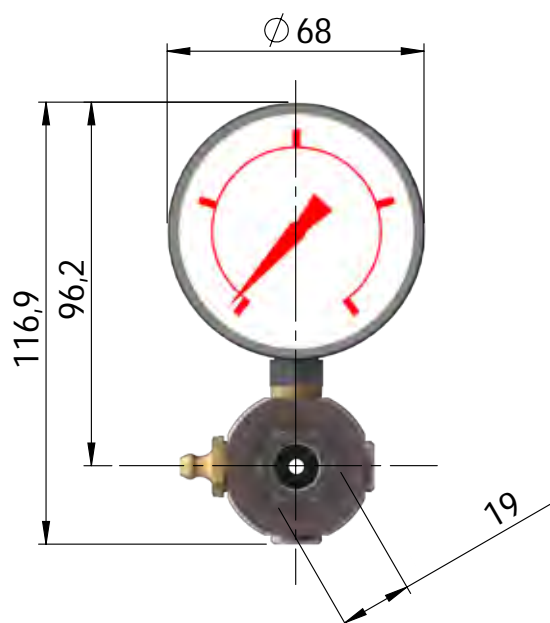
WELDING PROTECTION RING



CODICE CODE							
08.111.0		50	5	4			

**BLOCK WITH PRESSURE GAUGE AND GREASE NIPPLE
40.BMI.01**

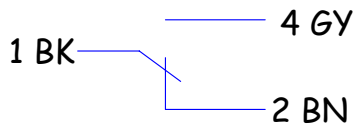
The block is mounted on the delivery line to control system operating pressure by means of a pressure gauge and to fill the system through a grease nipple with a hand or pneumatic pump.



BLOCK WITH PRESSURE GAUGE, ELECTROMECHANICAL SENSOR AND GREASE NIPPLE 40.BMI.03

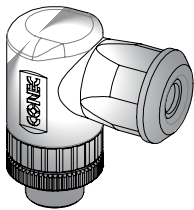
The block is mounted on the delivery line to control system operating pressure by means of a pressure gauge and to fill the system through a grease nipple with a hand or pneumatic pump.

The safety valve protects the system from overpressure and the electromagnetic sensor is triggered in case of high pressure on the main line.



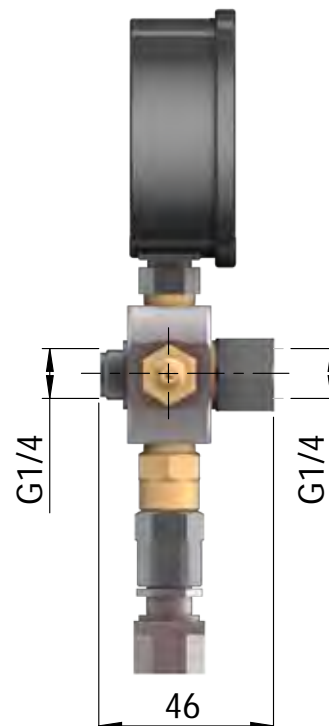
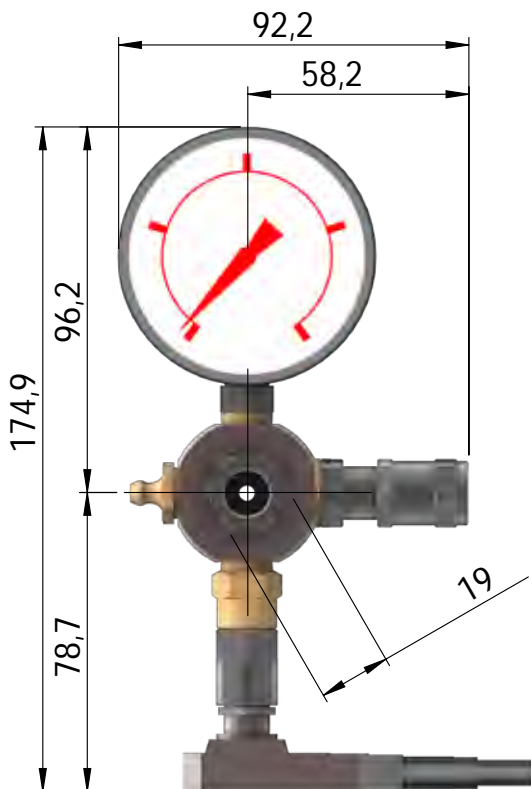
1 A 230 V AC – 250 V DC 40 W

Cable for electric connection (see page 52)



Recommended connection
1 - Brown

4 - Black



BLOCK WITH PRESSURE GAUGE, PROXIMITY SENSOR AND GREASE NIPPLE 40.BMI.04

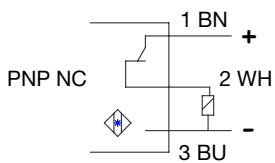
The block is mounted on the delivery line to control system operating pressure by means of a pressure gauge and to fill the system through a grease nipple with a hand or pneumatic pump.

The safety valve protects the system from overpressure and the proximity sensor is triggered in case of high pressure on the main line.

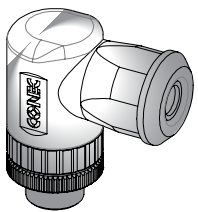
Features

VOLTAGE	Coil -30 V DC
OUTPUT CURRENT	MAX 200 Ma
CURRENT	< 12 Ma
TEMPERATURE	- 25°C + 70°
PROTECTION	IP 67
SENSOR BODY	STAINLESS STEEL

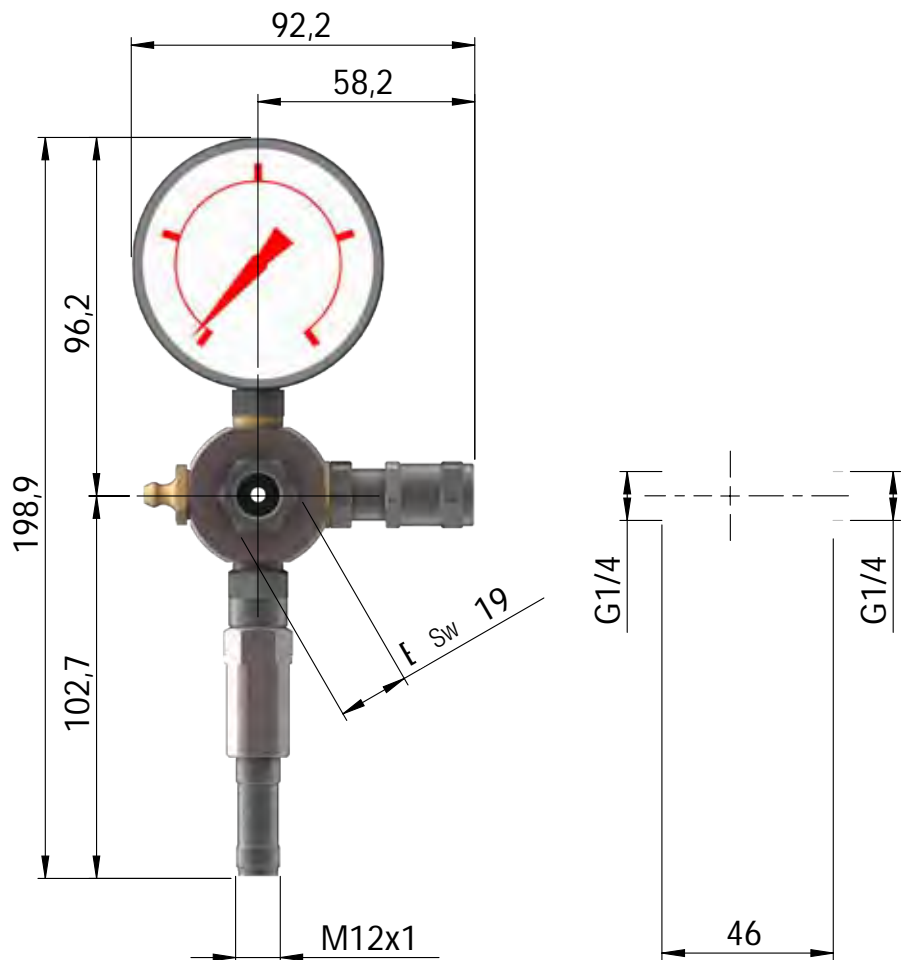
Wiring Diagram



Cable for electric connection (see page 52)

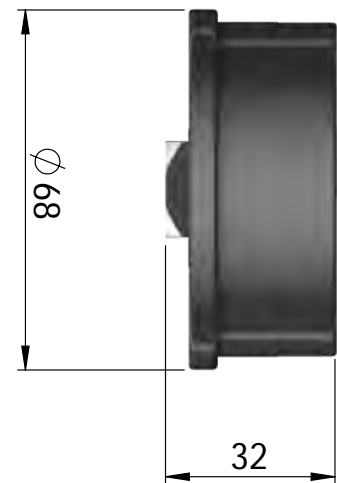
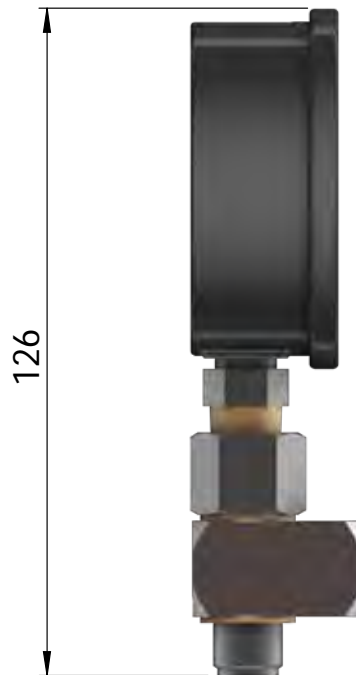
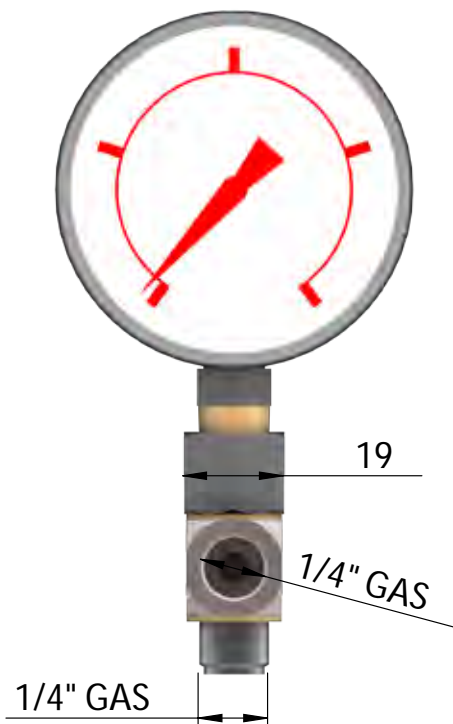


- Recommended connection
- 1 - Brown
 - 2 -
 - 3 -
 - 4 - Black



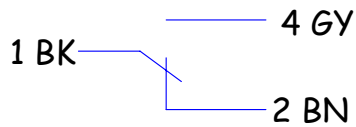
TWO-WAY JOINT WITH PRESSURE GAUGE A70.093523

The block is mounted on the delivery line to control system operating pressure by means of the pressure gauge.



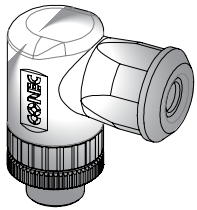
THREE-WAY JOINT WITH PRESSURE GAUGE AND ELECTROMECHANICAL SENSOR A70.093525

The block is mounted on the delivery line to control system operating pressure by means of the pressure gauge and is also equipped with an electromechanical sensor to check for high pressure on the main line.



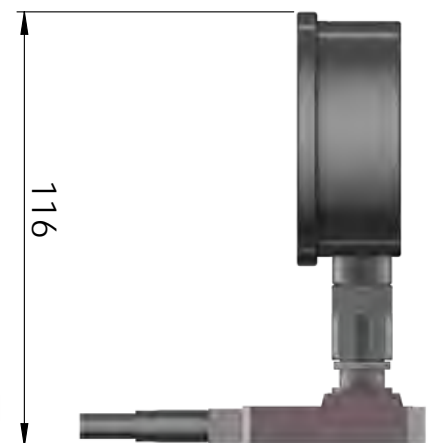
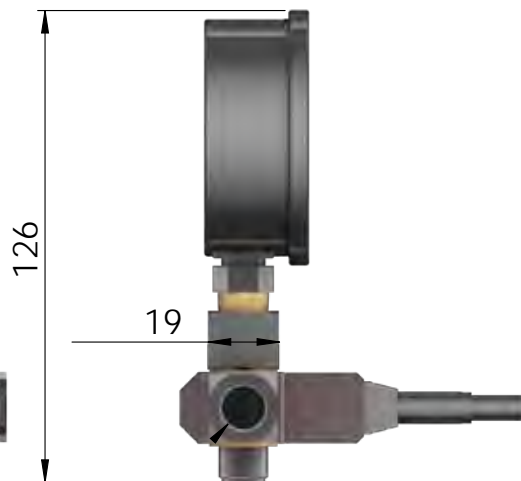
1 A 230 V AC – 250 V DC 40 W

Cable for electric connection (see page 52)



Recommended connection

- 1 - Brown
- 2 -
- 3 -
- 4 - Black



THREE-WAY JOINT WITH PRESSURE GAUGE AND PROXIMITY SENSOR A70.093524

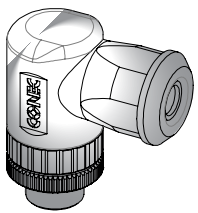
The block is mounted on the delivery line to control system operating pressure by means of the pressure gauge and is also equipped with a proximity sensor to check for high pressure on the main line.

Features

VOLTAGE	Coil -30 V DC
OUTPUT CURRENT	MAX 200 Ma
CURRENT	< 12 Ma
TEMPERATURE	-25°C +70°C
PROTECTION	IP 67
SENSOR BODY	STAINLESS STEEL

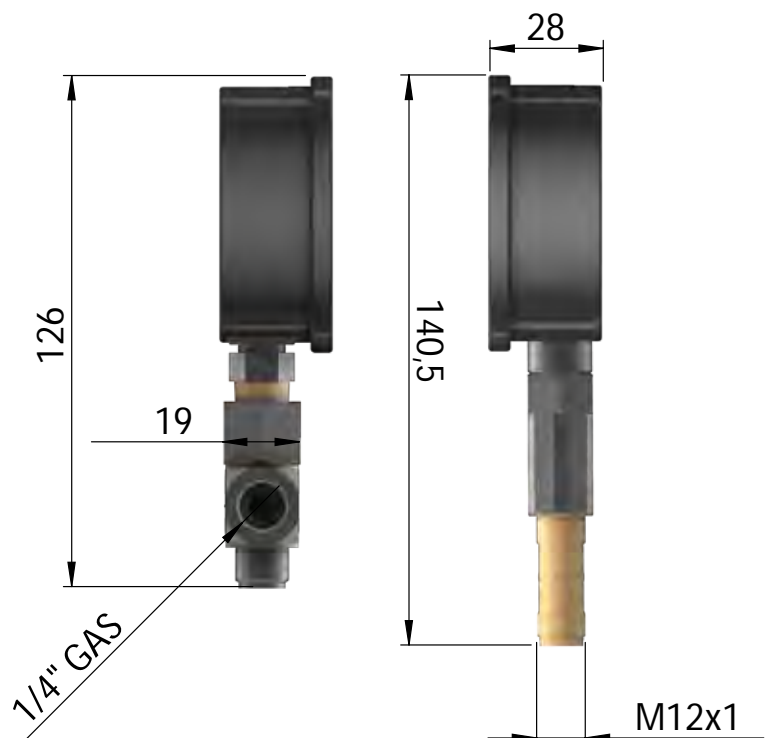
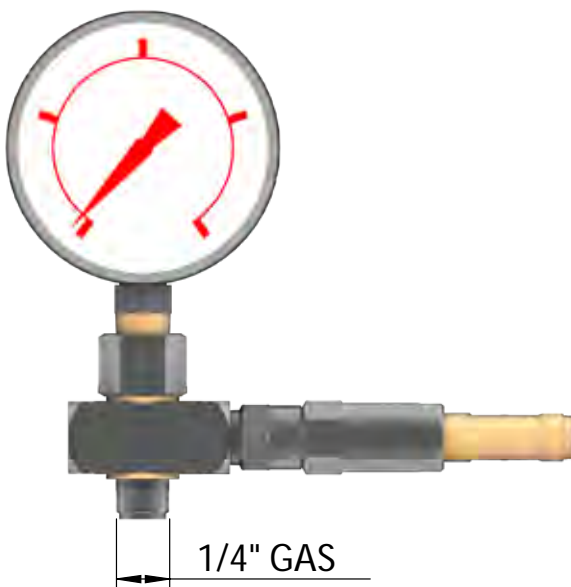
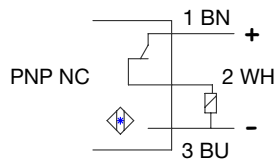


Cable for electric connection (see page 52)

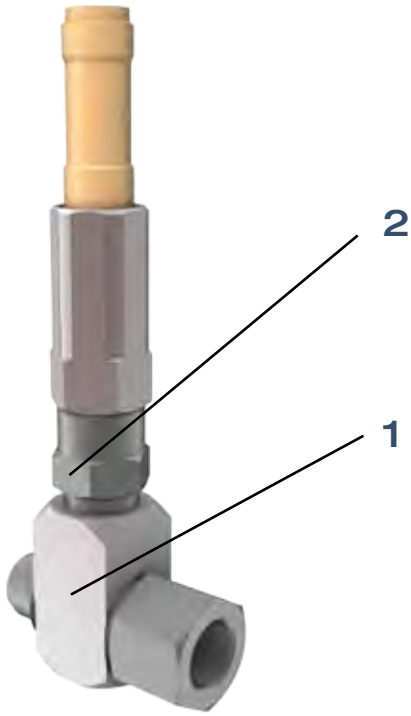


Recommended connection
1 - Brown
2 -
3 -
4 - Black

Wiring Diagram



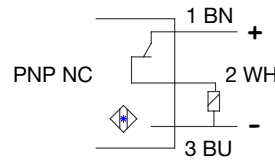
2-WAY 1/4" GAS JOINT + PROXIMITY OVERPRESSURE SENSOR 250 bar A70093543



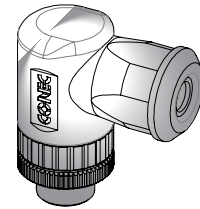
1
A70093186
2-way 1/4" Gas joint without bypass valve

2
09-712-7
Proximity overpressure sensor (250 bar)

Wiring Diagram



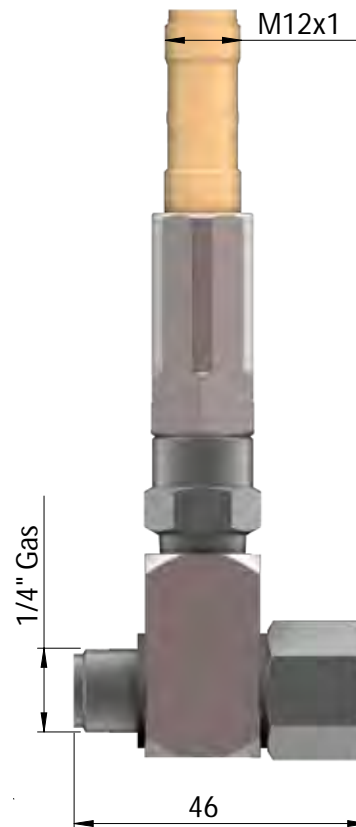
Cable for electric connection (see page 52)



Recommended connection
1 - Brown
2 -
3 -
4 - Black

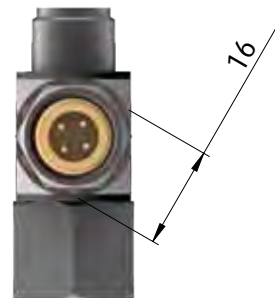


1/4" Gas



1/4" Gas

46



16

BUTTONS

LUMINOUS BUTTON



VOLTS	COLOUR	MATERIAL	PART NUMBER
12	green	plastic	40.PBG.12
24	green	plastic	40.PBG.24

RESET BUTTON WITHOUT LIGHT



40.PSB.00

RESET BUTTON WITH LIGHT



VOLTS	COLOUR	MATERIAL	PART NUMBER
12	green	Plastic	40.PSG.12
24	green	Plastic	40.PSG.24
12	red	Plastic	40.PSR.12
24	red	Plastic	40.PSR.24

BUTTONS

LUMINOUS BUTTON

40.COS.00



LIGHT



VOLTS	COLOUR	MATERIAL	PART NUMBER
12	green	Plastic	40.SLG.12
24	green	Plastic	40.SLG.24
12	red	Plastic	40.SLR.12
24	red	Plastic	40.SLR.24

LIGHTS

VOLTS	MATERIAL	PART NUMBER
12	plastic	40.COL.12
24	plastic	40.COL.24

